

Product datasheet for **TA310037**

ACTR1B Rabbit Polyclonal Antibody

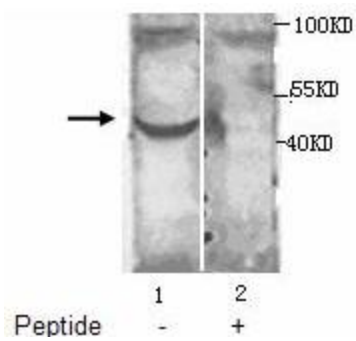
Product data:

Product Type:	Primary Antibodies
Applications:	WB
Recommended Dilution:	WB: 1:1000
Reactivity:	Human, Mouse, Rat
Host:	Rabbit
Isotype:	IgG
Clonality:	Polyclonal
Immunogen:	Synthetic peptide conjugated to KLH
Formulation:	PBS, pH 7.4 with 0.05% sodium azide.
Concentration:	lot specific
Purification:	Purified
Conjugation:	Unconjugated
Storage:	Store at -20°C as received.
Stability:	Stable for 12 months from date of receipt.
Gene Name:	ARP1 actin-related protein 1 homolog B, cetractin beta
Database Link:	NP_005726 Entrez Gene 226977 Mouse Entrez Gene 316333 Rat Entrez Gene 10120 Human P42025
Synonyms:	ARP1B; CTRN2; PC3



[View online »](#)

Product images:



Western blot analysis of fetal heart tissue lysates with ant-ACTR1B antibody at 1:1000 (Lane 1: No peptide blocked; Lane 2: Peptide blocked).