

## Product datasheet for **TA310036**

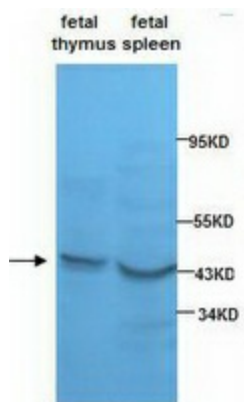
### Actin Regulatory Protein CAPG (CAPG) Rabbit Polyclonal Antibody

#### Product data:

Product Type:	Primary Antibodies
Applications:	WB
Recommended Dilution:	WB: 1:250
Reactivity:	Human, Mouse, Rat
Host:	Rabbit
Isotype:	IgG
Clonality:	Polyclonal
Immunogen:	Synthetic peptide conjugated to KLH
Formulation:	PBS, pH 7.4 with 0.05% sodium azide.
Concentration:	lot specific
Purification:	Purified
Conjugation:	Unconjugated
Storage:	Store at -20°C as received.
Stability:	Stable for 12 months from date of receipt.
Gene Name:	capping actin protein, gelsolin like
Database Link:	<a href="#">NP_001738</a> <a href="#">Entrez Gene 12332 Mouse</a> <a href="#">Entrez Gene 297339 Rat</a> <a href="#">Entrez Gene 822 Human</a> <a href="#">P40121</a>
Synonyms:	AFCP; HEL-S-66; MCP



[View online »](#)

**Product images:**

Western blot analysis of fetal spleen and fetal thymus lysates with anti-CapG antibody (1:250). This antibody identified a band of ~43kDa in fetal spleen and fetal thymus lysates.