

Product datasheet for **TA310034**

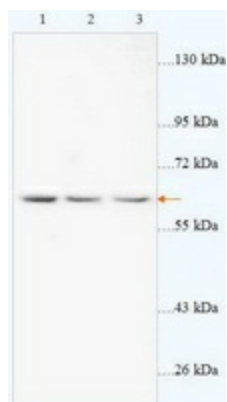
ACAT1 Rabbit Polyclonal Antibody

Product data:

Product Type:	Primary Antibodies
Applications:	WB
Recommended Dilution:	WB: 1:500~1:1000
Reactivity:	Human, Porcine, Rat, Murine
Host:	Rabbit
Isotype:	IgG
Clonality:	Polyclonal
Immunogen:	Synthetic peptide derived from Human ACAT1.
Formulation:	PBS, pH 7.4 with 0.02% sodium azide.
Concentration:	lot specific
Purification:	Affinity purified
Conjugation:	Unconjugated
Storage:	Store at -20°C as received.
Stability:	Stable for 12 months from date of receipt.
Gene Name:	acetyl-CoA acetyltransferase 1
Database Link:	NP_000010 Entrez Gene 25014 Rat Entrez Gene 38 Human P24752
Synonyms:	ACAT; MAT; T2; THIL
Protein Families:	Druggable Genome
Protein Pathways:	Butanoate metabolism, Fatty acid metabolism, Lysine degradation, Metabolic pathways, Propanoate metabolism, Pyruvate metabolism, Synthesis and degradation of ketone bodies, Terpenoid backbone biosynthesis, Tryptophan metabolism, Valine, leucine and isoleucine degradation



[View online »](#)

Product images:

Western blot analysis of rat liver lysate (Lane 1: 65ug lysate), Jurkat cells (Lane 2: 28ug lysate) and SGC cells (Lane 3: 33ug lysate) with anti-ACAT1 antibody diluted at 1:2000. (Predicted and observed size: 65kDa)