

Product datasheet for **TA310033**

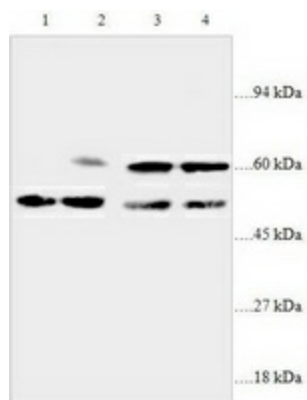
ACAT2 Rabbit Polyclonal Antibody

Product data:

Product Type:	Primary Antibodies
Applications:	WB
Recommended Dilution:	WB: 1:500~1:1000
Reactivity:	Human, Rat, Sheep, Pig, Mouse
Host:	Rabbit
Isotype:	IgG
Clonality:	Polyclonal
Immunogen:	Synthetic peptide derived from Human ACAT 2
Formulation:	PBS, pH 7.4 with 0.02% sodium azide.
Concentration:	lot specific
Purification:	Affinity purified
Conjugation:	Unconjugated
Storage:	Store at -20°C as received.
Stability:	Stable for 12 months from date of receipt.
Gene Name:	acetyl-CoA acetyltransferase 2
Database Link:	NP_005882 Entrez Gene 308100 Rat Entrez Gene 39 Human Q9BWD1
Synonyms:	acetoacetyl Coenzyme A thiolase; acetyl-Coenzyme A acetyltransferase 2; cytosolic acetoacetyl-CoA thiolase; OTTHUMP00000017527
Protein Families:	Druggable Genome
Protein Pathways:	Butanoate metabolism, Fatty acid metabolism, Lysine degradation, Metabolic pathways, Propanoate metabolism, Pyruvate metabolism, Synthesis and degradation of ketone bodies, Terpenoid backbone biosynthesis, Tryptophan metabolism, Valine, leucine and isoleucine degradation



[View online »](#)

Product images:

Western blot analysis of SGC cells (Lanes 1 and 2: 67ug cell lysate) and ECL cells (Lanes 3 and 4: 70ug cell lysate) with anti-ACAT2 antibody.