

Product datasheet for **TA310032**

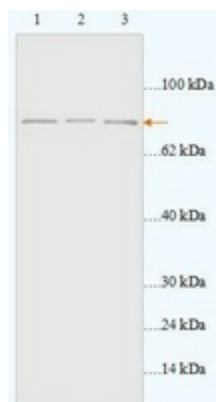
ABCF3 Rabbit Polyclonal Antibody

Product data:

Product Type:	Primary Antibodies
Applications:	WB
Recommended Dilution:	WB: 1:500~1:1000
Reactivity:	Human
Host:	Rabbit
Isotype:	IgG
Clonality:	Polyclonal
Immunogen:	Synthetic peptide derived from Human ABCF3.
Formulation:	PBS, pH 7.4 with 0.02% sodium azide.
Concentration:	lot specific
Purification:	Affinity purified
Conjugation:	Unconjugated
Storage:	Store at -20°C as received.
Stability:	Stable for 12 months from date of receipt.
Gene Name:	ATP binding cassette subfamily F member 3
Database Link:	NP_060828 Entrez Gene 55324 Human Q9NUQ8
Synonyms:	EST201864
Protein Families:	Druggable Genome



[View online »](#)

Product images:

Western blot analysis of ECL cells (Lane 1: 42ug lysate), SGC cells (Lane 2: 30ug lysate) and Jurkat cells (Lane 3: 40ug lysate) with anti-ABCF3 antibody diluted at 1:2000. (Predicted and observed size: 80kDa)