

Product datasheet for **TA310019**

SMAD1 Rabbit Polyclonal Antibody

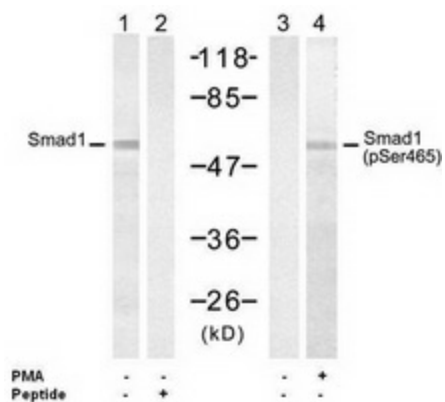
Product data:

Product Type:	Primary Antibodies
Applications:	WB
Recommended Dilution:	WB: 1:500~1:1000
Reactivity:	Human, Mouse, Rat
Modifications:	Phospho-specific
Host:	Rabbit
Isotype:	IgG
Clonality:	Polyclonal
Immunogen:	The antibody was produced against synthesized phosphopeptide derived from human Smad1 around the phosphorylation site of serine 465 (I-S-S-V-SP).
Formulation:	Rabbit IgG in phosphate buffered saline (without Mg ²⁺ and Ca ²⁺), pH 7.4, 150mM NaCl, 0.02% sodium azide and 50% glycerol.
Concentration:	lot specific
Purification:	Affinity purified
Conjugation:	Unconjugated
Storage:	Store at -20°C as received.
Stability:	Stable for 12 months from date of receipt.
Gene Name:	SMAD family member 1
Database Link:	NP_005891 Entrez Gene 17125 Mouse Entrez Gene 25671 Rat Entrez Gene 4086 Human Q15797
Synonyms:	BSP-1; BSP1; JV4-1; JV41; MADH1; MADR1
Protein Families:	Cancer stem cells, Druggable Genome, ES Cell Differentiation/IPS, Stem cell relevant signaling - JAK/STAT signaling pathway, Stem cell relevant signaling - TGFb/BMP signaling pathway, Transcription Factors
Protein Pathways:	TGF-beta signaling pathway



[View online »](#)

Product images:



Western blot analysis of extracts from 293 cells untreated or treated with PMA (200nM, 30min), using Smad1 antibody (Lanes 1 and 2) and Smad1 (phospho-Ser465) antibody (Lanes 3 and 4).