

Product datasheet for **TA310018**

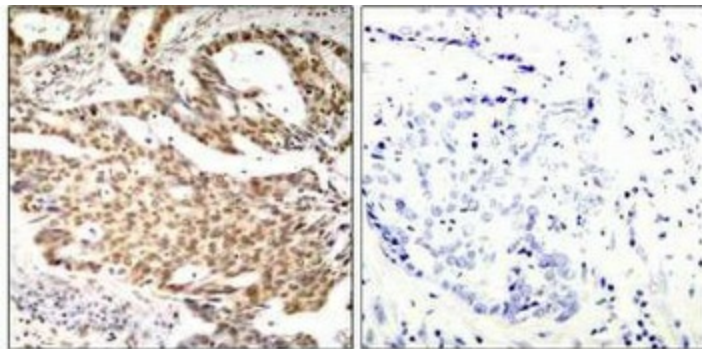
MEF2A Rabbit Polyclonal Antibody

Product data:

| | |
|-----------------------|----------------------------------------------------------------------------------------------------------------------------------------------------------------------------------------------------------------------------------------------------------------------|
| Product Type: | Primary Antibodies |
| Applications: | IHC |
| Recommended Dilution: | IHC: 1:50~1:100 |
| Reactivity: | Human, Mouse, Rat |
| Modifications: | Phospho-specific |
| Host: | Rabbit |
| Isotype: | IgG |
| Clonality: | Polyclonal |
| Immunogen: | The antiserum was produced against synthesized phosphopeptide derived from human MEF2A around the phosphorylation site of serine 408 (P-I-SP-P-P). |
| Formulation: | phosphate buffered saline (without Mg ²⁺ and Ca ²⁺), pH 7.4, 150mM NaCl, 0.02% sodium azide and 50% glycerol. |
| Concentration: | lot specific |
| Purification: | The antibody was affinity-purified from rabbit antiserum by affinity-chromatography using epitope-specific phosphopeptide. The antibody against non-phosphopeptide was removed by chromatography using non-phosphopeptide corresponding to the phosphorylation site. |
| Conjugation: | Unconjugated |
| Storage: | Store at -20°C as received. |
| Stability: | Stable for 12 months from date of receipt. |
| Gene Name: | myocyte enhancer factor 2A |
| Database Link: | NP_005578 Entrez Gene 17258 Mouse Entrez Gene 309957 Rat Entrez Gene 4205 Human Q02078 |
| Synonyms: | ADCAD1; mef2; RSRFC4; RSRFC9 |
| Protein Families: | Transcription Factors |



[View online »](#)

Product images:

P-Peptide

-

+

Immunohistochemistry analysis of paraffin-embedded human breast carcinoma tissue using MEF2A (phospho-Ser408) antibody.