

## Product datasheet for **TA310016**

### GAB1 Rabbit Polyclonal Antibody

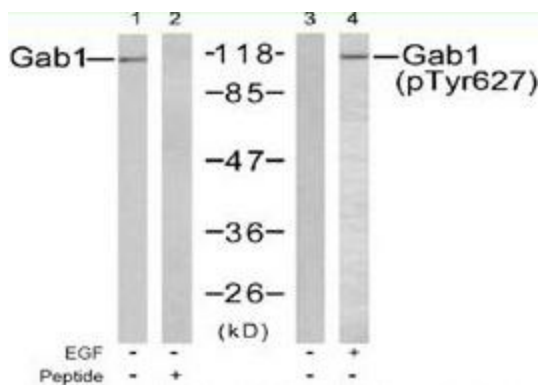
#### Product data:

Product Type:	Primary Antibodies
Applications:	WB
Recommended Dilution:	WB: 1:500~1:1000
Reactivity:	Human, Mouse
Modifications:	Phospho-specific
Host:	Rabbit
Isotype:	IgG
Clonality:	Polyclonal
Immunogen:	The antiserum was produced against synthesized phosphopeptide derived from human Gab1 around the phosphorylation site of tyrosine 627 (V-E-YP-L-D).
Formulation:	phosphate buffered saline (without Mg <sup>2+</sup> and Ca <sup>2+</sup> ), pH 7.4, 150mM NaCl, 0.02% sodium azide and 50% glycerol.
Purification:	The antibody was affinity-purified from rabbit antiserum by affinity-chromatography using epitope-specific phosphopeptide. The antibody against non-phosphopeptide was removed by chromatography using non-phosphopeptide corresponding to the phosphorylation site.
Conjugation:	Unconjugated
Storage:	Store at -20°C as received.
Stability:	Stable for 12 months from date of receipt.
Gene Name:	GRB2 associated binding protein 1
Database Link:	<a href="#">NP_002030</a> <a href="#">Entrez Gene 14388 Mouse</a> <a href="#">Entrez Gene 2549 Human</a> <a href="#">Q13480</a>
Synonyms:	GRB2-associated binding protein 1
Protein Families:	Druggable Genome
Protein Pathways:	ErbB signaling pathway, Neurotrophin signaling pathway, Renal cell carcinoma



[View online »](#)

## Product images:



Western blot analysis of extracts from HUVEC cells untreated or treated with EGF (200ng/ml, 15min), using Gab1 antibody (Lanes 1 and 2) and Gab1 (phospho-Tyr627) antibody (Lanes 3 and 4).