

Product datasheet for **TA310015**

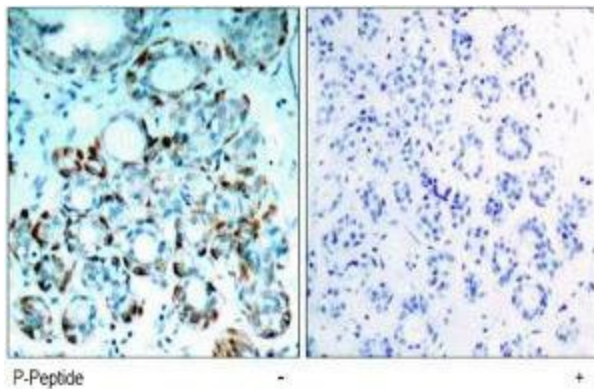
Bim (BCL2L11) Rabbit Polyclonal Antibody

Product data:

Product Type:	Primary Antibodies
Applications:	IHC
Recommended Dilution:	IHC: 1:50~1:100
Reactivity:	Human, Mouse, Rat
Modifications:	Phospho-specific
Host:	Rabbit
Isotype:	IgG
Clonality:	Polyclonal
Immunogen:	The antiserum was produced against synthesized phosphopeptide derived from humanBIM around the phosphorylation site of serine 69 (P-A-SP-P-G).
Formulation:	phosphate buffered saline (without Mg ²⁺ and Ca ²⁺), pH 7.4, 150mM NaCl, 0.02% sodium azide and 50% glycerol.
Concentration:	lot specific
Purification:	The antibody was affinity-purified from rabbit antiserum by affinity-chromatography usingepitope-specific phosphopeptide. The antibody against non-phosphopeptide was removedby chromatogramphy using non-phosphopeptide corresponding to the phosphorylation site.
Conjugation:	Unconjugated
Storage:	Store at -20°C as received.
Stability:	Stable for 12 months from date of receipt.
Gene Name:	BCL2 like 11
Database Link:	NP_006529 Entrez Gene 12125 Mouse Entrez Gene 64547 Rat Entrez Gene 10018 Human O43521
Synonyms:	BAM; BIM; BOD
Protein Families:	Druggable Genome



[View online »](#)

Product images:

Immunohistochemistry analysis of paraffin-embedded human breast carcinoma tissue using BIM (phospho-Ser69/65) antibody.