

Product datasheet for **TA310013**

DOK1 Rabbit Polyclonal Antibody

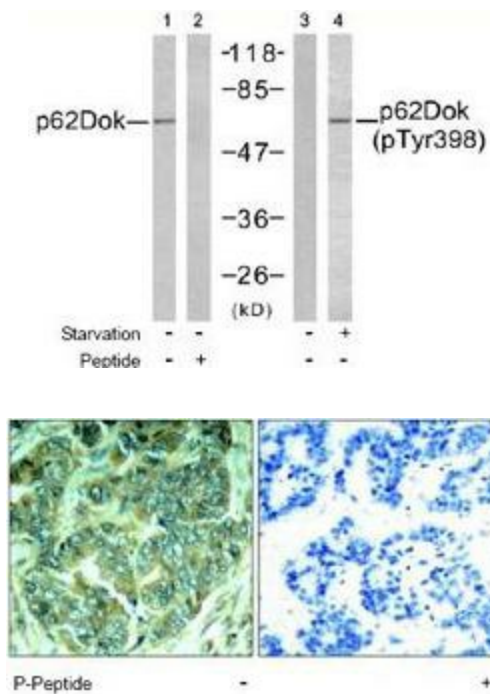
Product data:

Product Type:	Primary Antibodies
Applications:	IHC, WB
Recommended Dilution:	WB: 1:500~1:1000, IHC: 1:50~1:100
Reactivity:	Human, Mouse, Rat
Modifications:	Phospho-specific
Host:	Rabbit
Isotype:	IgG
Clonality:	Polyclonal
Immunogen:	The antiserum was produced against synthesized phosphopeptide derived from human p62Dok around the phosphorylation site of tyrosine 398 (E-G-YP-E-L).
Formulation:	phosphate buffered saline (without Mg ²⁺ and Ca ²⁺), pH 7.4, 150mM NaCl, 0.02% sodium azide and 50% glycerol.
Concentration:	lot specific
Purification:	The antibody was affinity-purified from rabbit antiserum by affinity-chromatography using epitope-specific phosphopeptide. The antibody against non-phosphopeptide was removed by chromatography using non-phosphopeptide corresponding to the phosphorylation site.
Conjugation:	Unconjugated
Storage:	Store at -20°C as received.
Stability:	Stable for 12 months from date of receipt.
Gene Name:	docking protein 1
Database Link:	NP_001372 Entrez Gene 13448 Mouse Entrez Gene 312477 Rat Entrez Gene 1796 Human Q99704
Synonyms:	P62DOK
Protein Families:	Druggable Genome



[View online »](#)

Product images:



Western blot analysis of extracts from K562 cells using p62Dok antibody (Lanes 1 and 2) and p62Dok (phospho-Tyr398) antibody (Lanes 3 and 4).

Immunohistochemistry analysis of paraffin-embedded human breast carcinoma tissue using p62Dok (phospho-Tyr398) antibody.