

Product datasheet for **TA310010**

NF2 Rabbit Polyclonal Antibody

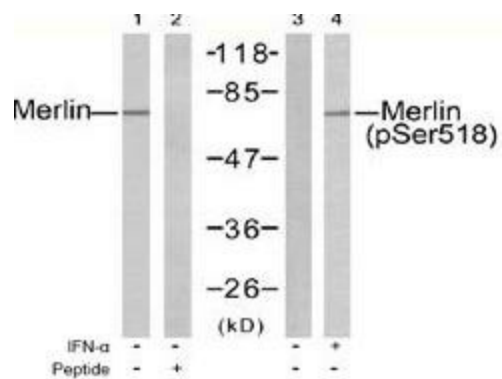
Product data:

Product Type:	Primary Antibodies
Applications:	WB
Recommended Dilution:	WB: 1:500~1:1000
Reactivity:	Human, Mouse, Rat
Modifications:	Phospho-specific
Host:	Rabbit
Isotype:	IgG
Clonality:	Polyclonal
Immunogen:	The antiserum was produced against synthesized phosphopeptide derived from humanMerlin around the phosphorylation site of serine 518 (R-L-SP-M-E).
Formulation:	phosphate buffered saline (without Mg ²⁺ and Ca ²⁺), pH 7.4, 150mM NaCl, 0.02% sodium azide and 50% glycerol.
Purification:	The antibody was affinity-purified from rabbit antiserum by affinity-chromatography usingepitope-specific phosphopeptide. The antibody against non-phosphopeptide was removedby chromatography using non-phosphopeptide corresponding to the phosphorylation site.
Conjugation:	Unconjugated
Storage:	Store at -20°C as received.
Stability:	Stable for 12 months from date of receipt.
Gene Name:	neurofibromin 2 (merlin)
Database Link:	NP_861973 Entrez Gene 18016 MouseEntrez Gene 25744 RatEntrez Gene 4771 Human P35240
Synonyms:	ACN; BANF; Merlin; merlin; moesin-ezrin-radixin like; moesin-ezrin-radixin-like protein; neurofibromin 2; neurofibromin 2 (bilateral acoustic neuroma); neurofibromin 2 (merlin); SCH; schwannomerlin; schwannomin
Protein Families:	Druggable Genome



[View online »](#)

Product images:



Western blot analysis of extracts from HUVEC cells untreated or treated with IFN-α (100ng/ml, 15min) using Merlin antibody (Lanes 1 and 2) and Merlin (phospho-Ser518) antibody (Lanes 3 and 4).