

## Product datasheet for **TA310008**

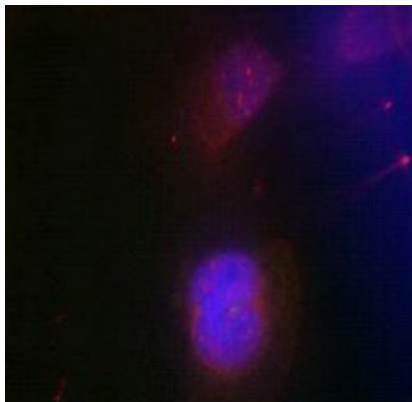
### BRCA1 Rabbit Polyclonal Antibody

#### Product data:

Product Type:	Primary Antibodies
Applications:	IF
Recommended Dilution:	IF: 1:100-1:200
Reactivity:	Human
Modifications:	Phospho-specific
Host:	Rabbit
Isotype:	IgG
Clonality:	Polyclonal
Immunogen:	The antibody was produced against synthesized phosphopeptide derived from humanBRCA1 around the phosphorylation site of serine 988 (I-K-SP-F-V).
Formulation:	Rabbit IgG in phosphate buffered saline (without Mg <sup>2+</sup> and Ca <sup>2+</sup> ), pH 7.4, 150mM NaCl,0.02% sodium azide and 50% glycerol.
Concentration:	lot specific
Purification:	Affinity purified
Conjugation:	Unconjugated
Storage:	Store at -20°C as received.
Stability:	Stable for 12 months from date of receipt.
Gene Name:	BRCA1, DNA repair associated
Database Link:	<a href="#">NP_009225</a> <a href="#">Entrez Gene 672 Human P38398</a>
Synonyms:	BRCAI; BRCC1; BROVCA1; FANCS; IRIS; PNCA4; PPP1R53; PSCP; RNF53
Protein Families:	Druggable Genome, Transcription Factors
Protein Pathways:	Ubiquitin mediated proteolysis



[View online »](#)

**Product images:**

Immunofluorescence staining of methanol-fixed HeLa cells using BRCA1 (phospho-Ser988) antibody (red).