

## Product datasheet for **TA310007**

### Ezrin (EZR) Rabbit Polyclonal Antibody

#### Product data:

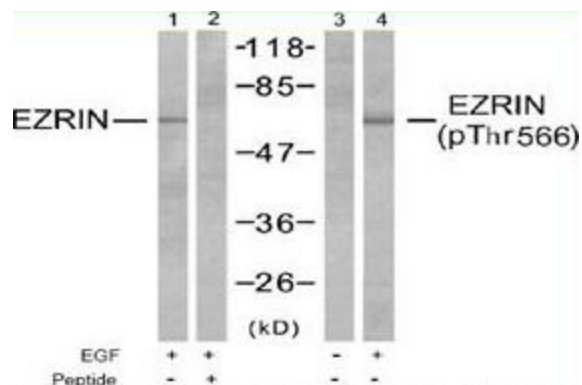
Product Type:	Primary Antibodies
Applications:	WB
Recommended Dilution:	WB: 1:500~1:1000
Reactivity:	Human, Mouse, Rat
Modifications:	Phospho-specific
Host:	Rabbit
Isotype:	IgG
Clonality:	Polyclonal
Immunogen:	The antiserum was produced against synthesized phosphopeptide derived from human Ezrin around the phosphorylation site of tyrosine 566 (Y-K-TP-L-R).
Formulation:	phosphate buffered saline (without Mg <sup>2+</sup> and Ca <sup>2+</sup> ), pH 7.4, 150mM NaCl, 0.02% sodium azide and 50% glycerol.
Concentration:	lot specific
Purification:	The antibody was affinity-purified from rabbit antiserum by affinity-chromatography using epitope-specific phosphopeptide. The antibody against non-phosphopeptide was removed by chromatography using non-phosphopeptide corresponding to the phosphorylation site.
Conjugation:	Unconjugated
Storage:	Store at -20°C as received.
Stability:	Stable for 12 months from date of receipt.
Gene Name:	ezrin
Database Link:	<a href="#">NP_003370</a> <a href="#">Entrez Gene 22350 Mouse</a> <a href="#">Entrez Gene 54319 Rat</a> <a href="#">Entrez Gene 7430 Human</a> <a href="#">P15311</a>
Synonyms:	CVIL; CVL; HEL-S-105; VIL2
Protein Families:	Druggable Genome



[View online »](#)

**Protein Pathways:** Leukocyte transendothelial migration, Pathogenic Escherichia coli infection, Regulation of actin cytoskeleton

**Product images:**



Western blot analysis of extracts from A431 cells untreated or treated with EGF (200ng/ml, 30min) using Ezrin antibody (Lanes 1 and 2) and Ezrin (phospho-Tyr566) antibody (Lanes 3 and 4).