

Product datasheet for **TA310005**

HSP90AB1 Rabbit Polyclonal Antibody

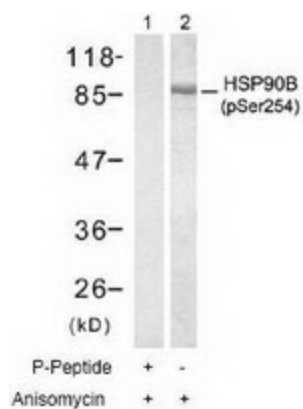
Product data:

Product Type:	Primary Antibodies
Applications:	WB
Recommended Dilution:	WB: 1:500~1:1000
Reactivity:	Human, Mouse, Rat
Modifications:	Phospho-specific
Host:	Rabbit
Isotype:	IgG
Clonality:	Polyclonal
Immunogen:	The antiserum was produced against synthesized phosphopeptide derived from human HSP90B around the phosphorylation site of serine 254 (V-G-SP-D-E).
Formulation:	phosphate buffered saline (without Mg ²⁺ and Ca ²⁺), pH 7.4, 150mM NaCl, 0.02% sodium azide and 50% glycerol.
Concentration:	lot specific
Purification:	The antibody was affinity-purified from rabbit antiserum by affinity-chromatography using epitope-specific phosphopeptide. The antibody against non-phosphopeptide was removed by chromatography using non-phosphopeptide corresponding to the phosphorylation site.
Conjugation:	Unconjugated
Storage:	Store at -20°C as received.
Stability:	Stable for 12 months from date of receipt.
Gene Name:	heat shock protein 90kDa alpha family class B member 1
Database Link:	NP_031381 Entrez Gene 15516 Mouse Entrez Gene 301252 Rat Entrez Gene 3326 Human P08238
Synonyms:	D6S182; HSP84; HSP90B; HSPC2; HSPCB
Protein Families:	Druggable Genome, Stem cell - Pluripotency
Protein Pathways:	Antigen processing and presentation, NOD-like receptor signaling pathway, Pathways in cancer, Progesterone-mediated oocyte maturation, Prostate cancer



[View online »](#)

Product images:



Western blot analysis of extracts from HT29 cells treated with anisomycin (500ng/ml, 30min) using HSP90B (phospho-Ser254) antibody.