

Product datasheet for **TA310004**

HDAC5 Rabbit Polyclonal Antibody

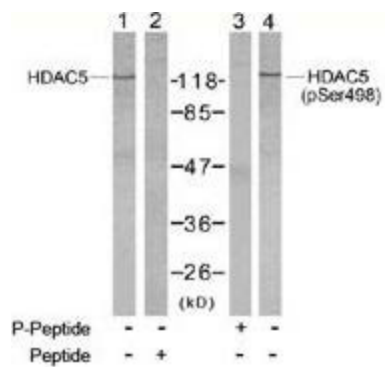
Product data:

Product Type:	Primary Antibodies
Applications:	IHC, WB
Recommended Dilution:	WB: 1:500~1:1000, IHC: 1:50~1:100
Reactivity:	Human, Mouse, Rat
Modifications:	Phospho-specific
Host:	Rabbit
Isotype:	IgG
Clonality:	Polyclonal
Immunogen:	The antiserum was produced against synthesized phosphopeptide derived from humanHDAC5 around the phosphorylation site of serine 498 (T-Q-SP-S-P).
Formulation:	phosphate buffered saline (without Mg ²⁺ and Ca ²⁺), pH 7.4, 150mM NaCl, 0.02% sodium azide and 50% glycerol.
Concentration:	lot specific
Purification:	The antibody was affinity-purified from rabbit antiserum by affinity-chromatography usingepitope-specific phosphopeptide. The antibody against non-phosphopeptide was removedby chromatogramphy using non-phosphopeptide corresponding to the phosphorylation site.
Conjugation:	Unconjugated
Storage:	Store at -20°C as received.
Stability:	Stable for 12 months from date of receipt.
Gene Name:	histone deacetylase 5
Database Link:	NP_631944 Entrez Gene 15184 Mouse Entrez Gene 84580 Rat Entrez Gene 10014 Human Q9UQL6
Synonyms:	antigen NY-CO-9; FLJ90614; HD5; histone deacetylase 5; KIAA0600; NY-CO-9
Protein Families:	Druggable Genome, Transcription Factors

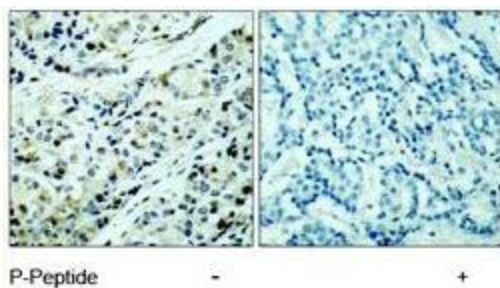


[View online »](#)

Product images:



Western blot analysis of extracts from NIH/3T3 cells using HDAC5 antibody (Lanes 1 and 2) and HDAC5 (phospho-Ser498) antibody (Lanes 3 and 4).



Immunohistochemistry analysis of paraffin-embedded human breast carcinoma tissue using HDAC5 (phospho-Ser498) antibody.