

Product datasheet for **TA310002**

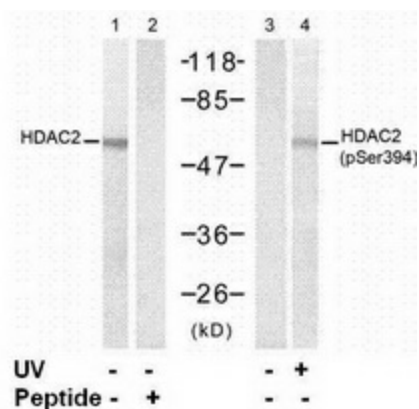
HDAC2 Rabbit Polyclonal Antibody

Product data:

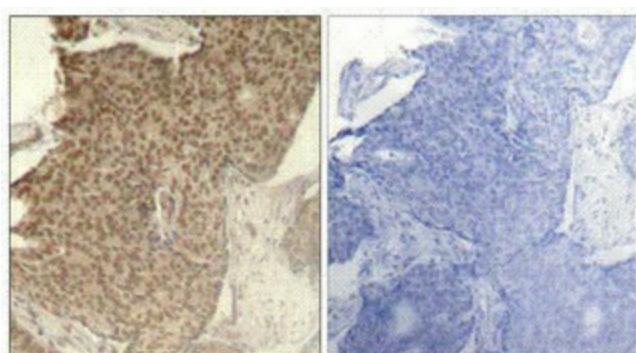
Product Type:	Primary Antibodies
Applications:	IHC, WB
Recommended Dilution:	WB: 1:500~1:1000, IHC: 1:50~1:100, IF: 1:100~1:200
Reactivity:	Human, Mouse, Rat
Modifications:	Phospho-specific
Host:	Rabbit
Isotype:	IgG
Clonality:	Polyclonal
Immunogen:	The antibody was produced against synthesized phosphopeptide derived from humanHDAC2 around the phosphorylation site of serine 394 (E-D-SP-G-D).
Formulation:	Rabbit IgG in phosphate buffered saline (without Mg ²⁺ and Ca ²⁺), pH 7.4, 150mM NaCl,0.02% sodium azide and 50% glycerol.
Concentration:	lot specific
Purification:	Affinity purified
Conjugation:	Unconjugated
Storage:	Store at -20°C as received.
Stability:	Stable for 12 months from date of receipt.
Gene Name:	histone deacetylase 2
Database Link:	NP_001518 Entrez Gene 15182 Mouse Entrez Gene 84577 Rat Entrez Gene 3066 Human Q92769
Synonyms:	HD2; RPD3; YAF1
Protein Families:	Druggable Genome, Stem cell - Pluripotency, Transcription Factors
Protein Pathways:	Cell cycle, Chronic myeloid leukemia, Huntington's disease, Notch signaling pathway, Pathways in cancer



[View online »](#)

Product images:


Western blot analysis of extracts from HT29 cells untreated or treated with UV, using HDAC2 antibody (Lanes 1 and 2) and HDAC2 (phospho-Ser394) antibody (Lanes 3 and 4).



P-Peptide - +

Immunohistochemistry analysis of paraffin-embedded human breast carcinoma tissue using HDAC2 (phospho-Ser394) antibody.