

## Product datasheet for **TA310001**

### Amyloid Precursor Protein (APP) Rabbit Polyclonal Antibody

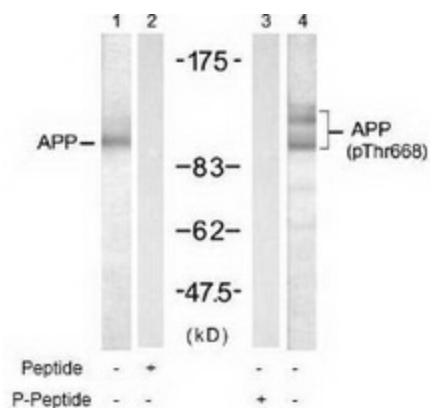
#### Product data:

Product Type:	Primary Antibodies
Applications:	WB
Recommended Dilution:	WB: 1:500~1:1000
Reactivity:	Human, Mouse, Rat
Modifications:	Phospho-specific
Host:	Rabbit
Isotype:	IgG
Clonality:	Polyclonal
Immunogen:	The antiserum was produced against synthesized phosphopeptide derived from human APP around the phosphorylation site of threonine 668 (A-V-TP-P-E).
Formulation:	phosphate buffered saline (without Mg <sup>2+</sup> and Ca <sup>2+</sup> ), pH 7.4, 150mM NaCl, 0.02% sodium azide and 50% glycerol.
Concentration:	lot specific
Purification:	The antibody was affinity-purified from rabbit antiserum by affinity-chromatography using epitope-specific phosphopeptide. The antibody against non-phosphopeptide was removed by chromatography using non-phosphopeptide corresponding to the phosphorylation site.
Conjugation:	Unconjugated
Storage:	Store at -20°C as received.
Stability:	Stable for 12 months from date of receipt.
Gene Name:	amyloid beta precursor protein
Database Link:	<a href="#">NP_000475</a> <a href="#">Entrez Gene 11820 Mouse</a> <a href="#">Entrez Gene 54226 Rat</a> <a href="#">Entrez Gene 351 Human</a> <a href="#">P05067</a>
Synonyms:	AAA; ABETA; ABPP; AD1; APPI; CTFgamma; CVAP; PN-II; PN2
Protein Families:	Druggable Genome, Transmembrane
Protein Pathways:	Alzheimer's disease



[View online »](#)

**Product images:**



Western blot analysis of extracts from mouse brain tissue, using APP antibody (Lanes 1 and 2) and APP (phospho-Thr668) antibody (Lanes 3 and 4).