

## Product datasheet for **TA310000**

### alpha Adducin (ADD1) Rabbit Polyclonal Antibody

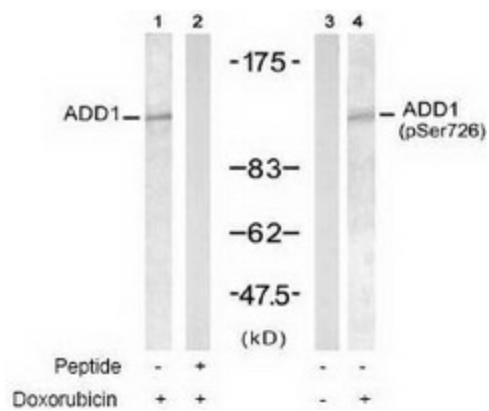
#### Product data:

|                       |  |
|-----------------------|--|
| Product Type:         | Primary Antibodies   |
| Applications:         | WB   |
| Recommended Dilution: | WB: 1:500~1:1000   |
| Reactivity:           | Human, Mouse, Rat  |
| Modifications:        | Phospho-specific   |
| Host:                 | Rabbit   |
| Isotype:              | IgG  |
| Clonality:            | Polyclonal   |
| Immunogen:            | The antiserum was produced against synthesized phosphopeptide derived from human ADD1 around the phosphorylation site of serine 726 (T-P-S P-F-L).   |
| Formulation:          | phosphate buffered saline (without Mg <sup>2+</sup> and Ca <sup>2+</sup> ), pH 7.4, 150mM NaCl, 0.02% sodium azide and 50% glycerol.   |
| Concentration:        | lot specific   |
| Purification:         | The antibody was affinity-purified from rabbit antiserum by affinity-chromatography using epitope-specific phosphopeptide. The antibody against non-phosphopeptide was removed by chromatography using non-phosphopeptide corresponding to the phosphorylation site. |
| Conjugation:          | Unconjugated   |
| Storage:              | Store at -20°C as received.  |
| Stability:            | Stable for 12 months from date of receipt.   |
| Gene Name:            | adducin 1  |
| Database Link:        | <a href="#">NP_001110</a><br><a href="#">Entrez Gene 11518 Mouse</a> <a href="#">Entrez Gene 24170 Rat</a> <a href="#">Entrez Gene 118 Human</a><br><a href="#">P35611</a>   |
| Synonyms:             | ADDA   |
| Protein Families:     | Druggable Genome   |



[View online »](#)

## Product images:



Western blot analysis of extracts from HT29 cells untreated or treated with Doxorubicin (1mM, 30min), using ADD1 antibody (Lanes 1 and 2) and ADD1 (phospho-Ser726) antibody (Lanes 3 and 4).