

Product datasheet for **TA309999**

MEK4 (MAP2K4) Rabbit Polyclonal Antibody

Product data:

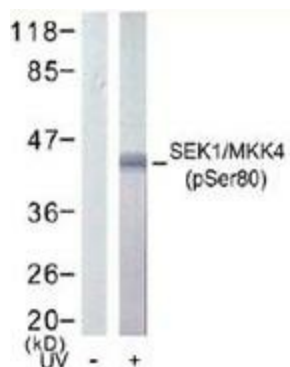
Product Type:	Primary Antibodies
Applications:	IHC, WB
Recommended Dilution:	WB: 1:500~1:1000, IHC: 1:50~1:100
Reactivity:	Human, Mouse, Rat
Modifications:	Phospho-specific
Host:	Rabbit
Isotype:	IgG
Clonality:	Polyclonal
Immunogen:	The antiserum was produced against synthesized phosphopeptide derived from humanSEK1/MKK4 around the phosphorylation site of serine 80 (T-H-SP-I-E).
Formulation:	phosphate buffered saline (without Mg ²⁺ and Ca ²⁺), pH 7.4, 150mM NaCl, 0.02% sodium azide and 50% glycerol.
Concentration:	lot specific
Purification:	The antibody was affinity-purified from rabbit antiserum by affinity-chromatography usingepitope-specific phosphopeptide. The antibody against non-phosphopeptide was removedby chromatography using non-phosphopeptide corresponding to the phosphorylation site.
Conjugation:	Unconjugated
Storage:	Store at -20°C as received.
Stability:	Stable for 12 months from date of receipt.
Gene Name:	mitogen-activated protein kinase kinase 4
Database Link:	NP_003001 Entrez Gene 26398 MouseEntrez Gene 287398 RatEntrez Gene 6416 Human P45985
Synonyms:	JNKK; JNKK1; MAPKK4; MEK4; MKK4; PRKMK4; SAPKK-1; SAPKK1; SEK1; SERK1; SKK1
Protein Families:	Druggable Genome, Protein Kinase



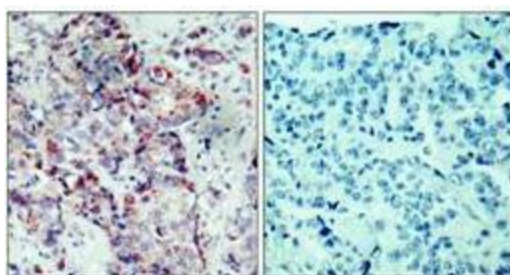
[View online »](#)

Protein Pathways: Epithelial cell signaling in Helicobacter pylori infection, ErbB signaling pathway, Fc epsilon RI signaling pathway, GnRH signaling pathway, MAPK signaling pathway, Toll-like receptor signaling pathway

Product images:



Western blot analysis of extracts from 293 cells untreated or treated with UV, using SEK1/MKK4 (phospho-Ser80) antibody.



Immunohistochemistry analysis of paraffin-embedded human breast carcinoma tissue using SEK1/MKK4 (phospho-Ser80) antibody.