

Product datasheet for **TA309997**

AMPK alpha 2 (PRKAA2) Rabbit Polyclonal Antibody

Product data:

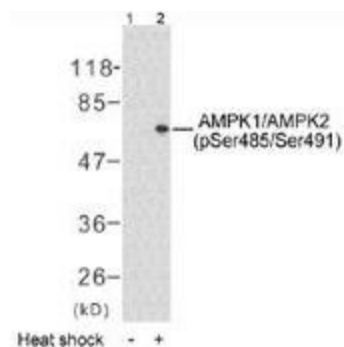
Product Type:	Primary Antibodies
Applications:	IHC, WB
Recommended Dilution:	WB: 1:500~1:1000, IHC: 1:50~1:100
Reactivity:	Human, Mouse, Rat
Modifications:	Phospho-specific
Host:	Rabbit
Isotype:	IgG
Clonality:	Polyclonal
Immunogen:	The antiserum was produced against synthesized phosphopeptide derived from human AMPK1/AMPK2 around the phosphorylation site of serine 485/491 (S-G- SP-V-S).
Formulation:	phosphate buffered saline (without Mg ²⁺ and Ca ²⁺), pH 7.4, 150mM NaCl, 0.02% sodium azide and 50% glycerol.
Concentration:	lot specific
Purification:	The antibody was affinity-purified from rabbit antiserum by affinity-chromatography using epitope-specific phosphopeptide. The antibody against non-phosphopeptide was removed by chromatography using non-phosphopeptide corresponding to the phosphorylation site.
Conjugation:	Unconjugated
Storage:	Store at -20°C as received.
Stability:	Stable for 12 months from date of receipt.
Gene Name:	protein kinase AMP-activated catalytic subunit alpha 2
Database Link:	NP_006243 Entrez Gene 78975 Rat Entrez Gene 108079 Mouse Entrez Gene 5563 Human P54646
Synonyms:	AMPK; AMPK2; AMPKa2; PRKAA
Protein Families:	Druggable Genome, Protein Kinase



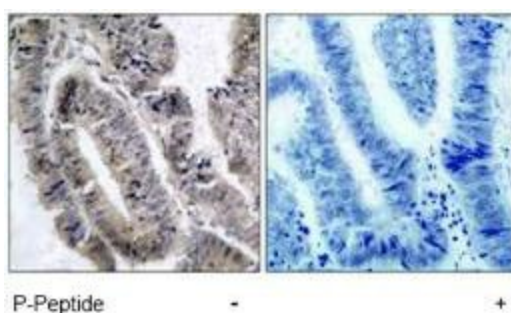
[View online »](#)

Protein Pathways: Adipocytokine signaling pathway, Hypertrophic cardiomyopathy (HCM), Insulin signaling pathway, mTOR signaling pathway, Regulation of autophagy

Product images:



Western blot analysis of extracts from HeLa cells untreated or treated with heat shock (30min), using AMPK1/AMPK2 (phospho-Ser485/Ser491) antibody.



Immunohistochemistry analysis of paraffin-embedded human colon carcinoma tissue using AMPK1/AMPK2 (phospho-Ser485/Ser491) antibody.