

Product datasheet for **TA309996**

DNA PKcs (PRKDC) Rabbit Polyclonal Antibody

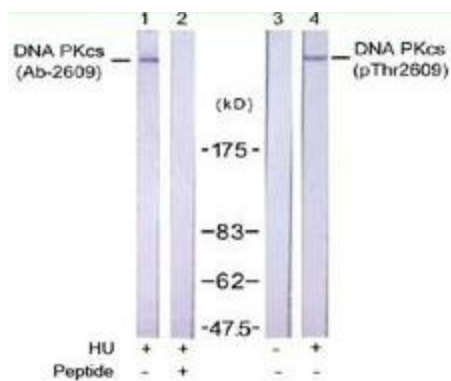
Product data:

Product Type:	Primary Antibodies
Applications:	WB
Recommended Dilution:	WB: 1:500~1:1000
Reactivity:	Human
Modifications:	Phospho-specific
Host:	Rabbit
Isotype:	IgG
Clonality:	Polyclonal
Immunogen:	The antiserum was produced against synthesized phosphopeptide derived from human DNA PKcs around the phosphorylation site of threonine 2609 (V-E-TP-Q-A).
Formulation:	phosphate buffered saline (without Mg ²⁺ and Ca ²⁺), pH 7.4, 150mM NaCl, 0.02% sodium azide and 50% glycerol.
Concentration:	lot specific
Purification:	The antibody was affinity-purified from rabbit antiserum by affinity-chromatography using epitope-specific phosphopeptide. The antibody against non-phosphopeptide was removed by chromatography using non-phosphopeptide corresponding to the phosphorylation site.
Conjugation:	Unconjugated
Storage:	Store at -20°C as received.
Stability:	Stable for 12 months from date of receipt.
Gene Name:	protein kinase, DNA-activated, catalytic polypeptide
Database Link:	NP_008835 Entrez Gene 5591 Human P78527
Synonyms:	DNA-PKcs; DNAPK; DNPK1; HYRC; HYRC1; IMD26; p350; XRCC7
Protein Families:	Druggable Genome, Protein Kinase
Protein Pathways:	Cell cycle, Non-homologous end-joining



[View online »](#)

Product images:



Western blot analysis of extracts from K562 cells untreated or treated with hydroxyurea, using DNAPKcs antibody (Lanes 1 and 2) and DNA PKcs (phospho-Thr2609) antibody (Lanes 3 and 4).