

Product datasheet for **TA309991**

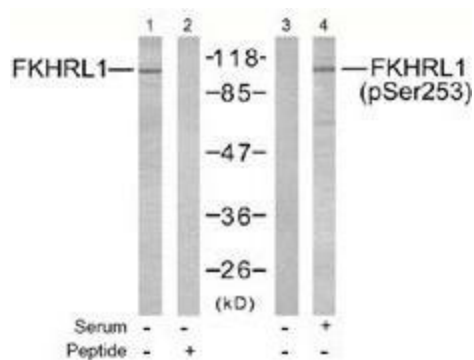
FOXO3 Rabbit Polyclonal Antibody

Product data:

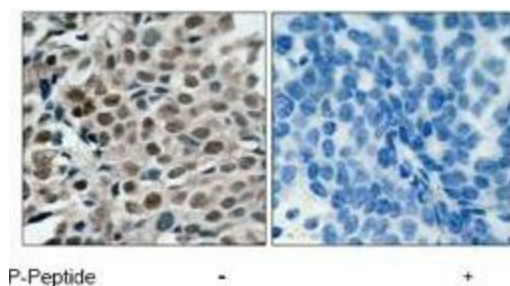
Product Type:	Primary Antibodies
Applications:	IHC, WB
Recommended Dilution:	WB: 1:500~1:1000, IHC: 1:50~1:100
Reactivity:	Human, Mouse, Rat
Modifications:	Phospho-specific
Host:	Rabbit
Isotype:	IgG
Clonality:	Polyclonal
Immunogen:	The antiserum was produced against synthesized phosphopeptide derived from humanFKHRL1 around the phosphorylation site of serine 253 (A-V-SP-M-D).
Formulation:	phosphate buffered saline (without Mg ²⁺ and Ca ²⁺), pH 7.4, 150mM NaCl, 0.02% sodium azide and 50% glycerol.
Purification:	The antibody was affinity-purified from rabbit antiserum by affinity-chromatography usingepitope-specific phosphopeptide. The antibody against non-phosphopeptide was removedby chromatogramphy using non-phosphopeptide corresponding to the phosphorylation site.
Conjugation:	Unconjugated
Storage:	Store at -20°C as received.
Stability:	Stable for 12 months from date of receipt.
Gene Name:	forkhead box O3
Database Link:	NP_001446 Entrez Gene 56484 MouseEntrez Gene 294515 RatEntrez Gene 2309 Human O43524
Synonyms:	AF6q21; FKHRL1; FKHRL1P2; FOXO2; FOXO3A
Protein Families:	Druggable Genome, Transcription Factors
Protein Pathways:	Chemokine signaling pathway, Endometrial cancer, Neurotrophin signaling pathway, Non-small cell lung cancer



[View online »](#)

Product images:


Western blot analysis of extracts from NIH/3T3 cells using FKHRL1 antibody (Lanes 1 and 2) and FKHRL1 (phospho-Ser253) antibody (Lanes 3 and 4).



Immunohistochemistry analysis of paraffin-embedded human breast carcinoma tissue using FKHRL1 (phospho-Ser253) antibody.