

Product datasheet for **TA309988**

Chk2 (CHEK2) Rabbit Polyclonal Antibody

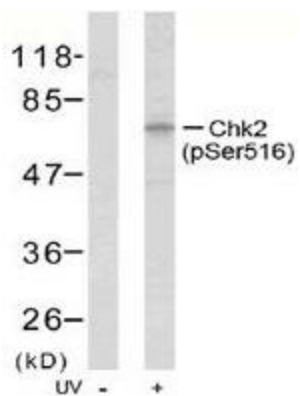
Product data:

Product Type:	Primary Antibodies
Applications:	WB
Recommended Dilution:	WB: 1:500~1:1000
Reactivity:	Human
Modifications:	Phospho-specific
Host:	Rabbit
Isotype:	IgG
Clonality:	Polyclonal
Immunogen:	The antiserum was produced against synthesized phosphopeptide derived from humanChk2 around the phosphorylation site of serine 516 (Q-P-SP-T-S).
Formulation:	phosphate buffered saline (without Mg ²⁺ and Ca ²⁺), pH 7.4, 150mM NaCl, 0.02% sodium azide and 50% glycerol.
Concentration:	lot specific
Purification:	The antibody was affinity-purified from rabbit antiserum by affinity-chromatography using epitope-specific phosphopeptide. The antibody against non-phosphopeptide was removed by chromatography using non-phosphopeptide corresponding to the phosphorylation site.
Conjugation:	Unconjugated
Storage:	Store at -20°C as received.
Stability:	Stable for 12 months from date of receipt.
Gene Name:	checkpoint kinase 2
Database Link:	NP_665861 Entrez Gene 11200 Human O96017
Synonyms:	CDS1; CHK2; hCds1; HuCds1; LFS2; PP1425; RAD53
Protein Families:	Druggable Genome, Protein Kinase, Stem cell - Pluripotency
Protein Pathways:	Cell cycle, p53 signaling pathway



[View online »](#)

Product images:



Western blot analysis of extracts from HeLa cells using CHK2 (phospho-Ser516) antibody.