

Product datasheet for **TA309987**

MEK6 (MAP2K6) Rabbit Polyclonal Antibody

Product data:

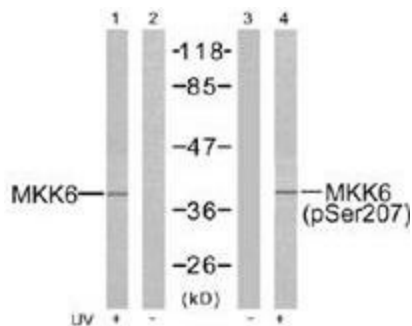
Product Type:	Primary Antibodies
Applications:	IHC, WB
Recommended Dilution:	WB: 1:500~1:1000, IHC: 1:50~1:100
Reactivity:	Human, Rat
Modifications:	Phospho-specific
Host:	Rabbit
Isotype:	IgG
Clonality:	Polyclonal
Immunogen:	The antiserum was produced against synthesized phosphopeptide derived from humanMKK6 around the phosphorylation site of serine 207 (V-D-SP-V-A).
Formulation:	phosphate buffered saline (without Mg ²⁺ and Ca ²⁺), pH 7.4, 150mM NaCl, 0.02% sodium azide and 50% glycerol.
Concentration:	lot specific
Purification:	The antibody was affinity-purified from rabbit antiserum by affinity-chromatography usingepitope-specific phosphopeptide. The antibody against non-phosphopeptide was removedby chromatogramphy using non-phosphopeptide corresponding to the phosphorylation site.
Conjugation:	Unconjugated
Storage:	Store at -20°C as received.
Stability:	Stable for 12 months from date of receipt.
Gene Name:	mitogen-activated protein kinase kinase 6
Database Link:	NP_002749 Entrez Gene 114495 Rat Entrez Gene 5608 Human P52564
Synonyms:	MAPKK6; MEK6; MKK6; PRKMK6; SAPKK-3; SAPKK3
Protein Families:	Druggable Genome, Protein Kinase



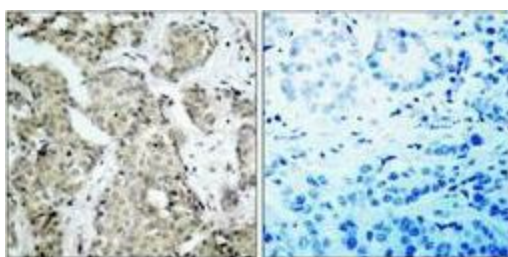
[View online »](#)

Protein Pathways: Amyotrophic lateral sclerosis (ALS), Fc epsilon RI signaling pathway, GnRH signaling pathway, MAPK signaling pathway, Toll-like receptor signaling pathway

Product images:



Western blot analysis of extracts from MDA-MB-435 cells untreated or treated with UV, using MKK6 antibody (Lanes 1 and 2) and MKK6 (phospho-Ser207) antibody (Lanes 3 and 4).



Immunohistochemistry analysis of paraffin-embedded human breast carcinoma tissue using MKK6 (phospho-Ser207) antibody.

P-Peptide - +