

Product datasheet for **TA309985**

CDC25A Rabbit Polyclonal Antibody

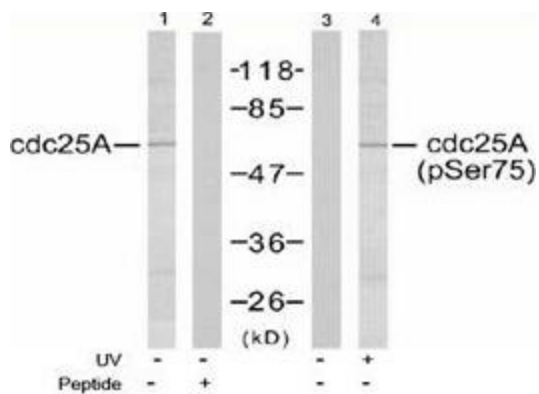
Product data:

Product Type:	Primary Antibodies
Applications:	WB
Recommended Dilution:	WB: 1:500~1:1000
Reactivity:	Human, Mouse, Rat
Modifications:	Phospho-specific
Host:	Rabbit
Isotype:	IgG
Clonality:	Polyclonal
Immunogen:	The antiserum was produced against synthesized phosphopeptide derived from humancdc25A around the phosphorylation site of serine 75 (M-G-SP-S-E).
Formulation:	phosphate buffered saline (without Mg ²⁺ and Ca ²⁺), pH 7.4, 150mM NaCl, 0.02% sodium azide and 50% glycerol.
Concentration:	lot specific
Purification:	The antibody was affinity-purified from rabbit antiserum by affinity-chromatography usingepitope-specific phosphopeptide. The antibody against non-phosphopeptide was removedby chromatography using non-phosphopeptide corresponding to the phosphorylation site.
Conjugation:	Unconjugated
Storage:	Store at -20°C as received.
Stability:	Stable for 12 months from date of receipt.
Gene Name:	cell division cycle 25A
Database Link:	NP_001780 Entrez Gene 12530 Mouse Entrez Gene 171102 Rat Entrez Gene 993 Human P30304
Synonyms:	CDC25A2
Protein Families:	Druggable Genome, Phosphatase
Protein Pathways:	Cell cycle, Progesterone-mediated oocyte maturation



[View online »](#)

Product images:



Western blot analysis of extracts from A2780 cells using CDC25A antibody (Lanes 1 and 2) and CDC25A (phospho-Ser75) antibody (Lanes 3 and 4).