

Product datasheet for **TA309984**

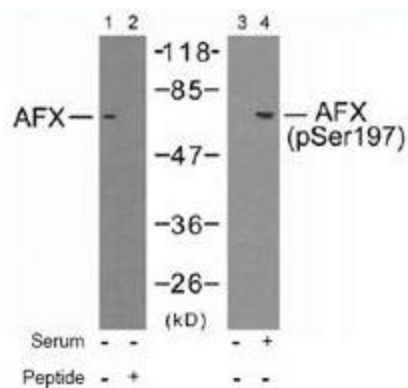
FOXO4 Rabbit Polyclonal Antibody

Product data:

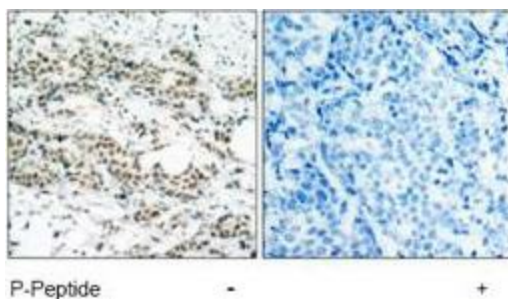
Product Type:	Primary Antibodies
Applications:	IHC, WB
Recommended Dilution:	WB: 1:500~1:1000, IHC: 1:50~1:100
Reactivity:	Human, Mouse, Rat
Modifications:	Phospho-specific
Host:	Rabbit
Isotype:	IgG
Clonality:	Polyclonal
Immunogen:	The antiserum was produced against synthesized phosphopeptide derived from humanAFX around the phosphorylation site of serine 197 (A-A-SP-M-D).
Formulation:	phosphate buffered saline (without Mg ²⁺ and Ca ²⁺), pH 7.4, 150mM NaCl, 0.02% sodium azide and 50% glycerol.
Concentration:	lot specific
Purification:	The antibody was affinity-purified from rabbit antiserum by affinity-chromatography using epitope-specific phosphopeptide. The antibody against non-phosphopeptide was removed by chromatography using non-phosphopeptide corresponding to the phosphorylation site.
Conjugation:	Unconjugated
Storage:	Store at -20°C as received.
Stability:	Stable for 12 months from date of receipt.
Gene Name:	forkhead box O4
Database Link:	NP_005929 Entrez Gene 54601 Mouse Entrez Gene 302415 Rat Entrez Gene 4303 Human P98177
Synonyms:	AFX; AFX1; MLLT7
Protein Families:	Transcription Factors



[View online »](#)

Product images:


Western blot analysis of extracts from 293 cells using AFX antibody (Lanes 1 and 2) and AFX (phospho-Ser197) antibody (Lanes 3 and 4).



Immunohistochemistry analysis of paraffin-embedded human breast carcinoma tissue using AFX (phospho-Ser197) antibody.