

## Product datasheet for **TA309983**

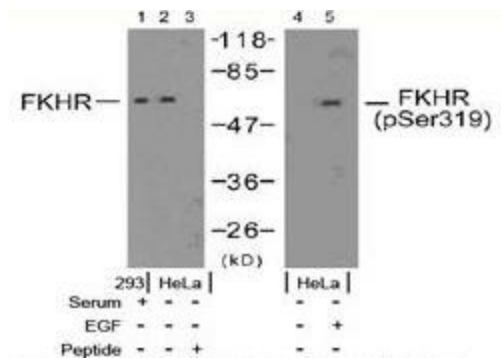
### FOXO1 Rabbit Polyclonal Antibody

#### Product data:

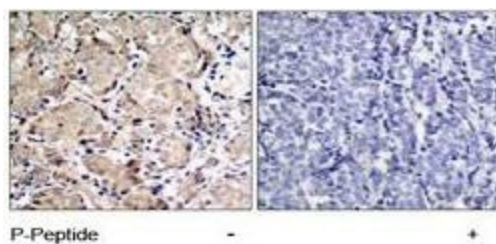
Product Type:	Primary Antibodies
Applications:	IHC, WB
Recommended Dilution:	WB: 1:500~1:1000, IHC: 1:50~1:100
Reactivity:	Human, Mouse, Rat
Modifications:	Phospho-specific
Host:	Rabbit
Isotype:	IgG
Clonality:	Polyclonal
Immunogen:	The antiserum was produced against synthesized phosphopeptide derived from humanFKHR around the phosphorylation site of serine 319 (T-S-SP-N-A).
Formulation:	phosphate buffered saline (without Mg <sup>2+</sup> and Ca <sup>2+</sup> ), pH 7.4, 150mM NaCl, 0.02% sodium azide and 50% glycerol.
Concentration:	lot specific
Purification:	The antibody was affinity-purified from rabbit antiserum by affinity-chromatography usingepitope-specific phosphopeptide. The antibody against non-phosphopeptide was removedby chromatogramphy using non-phosphopeptide corresponding to the phosphorylation site.
Conjugation:	Unconjugated
Storage:	Store at -20°C as received.
Stability:	Stable for 12 months from date of receipt.
Gene Name:	forkhead box O1
Database Link:	<a href="#">NP_002006</a> <a href="#">Entrez Gene 56458 Mouse</a> <a href="#">Entrez Gene 84482 Rat</a> <a href="#">Entrez Gene 2308 Human</a> <a href="#">Q12778</a>
Synonyms:	FKH1; FKHR; FOXO1A
Protein Families:	Druggable Genome, Transcription Factors
Protein Pathways:	Insulin signaling pathway, Pathways in cancer, Prostate cancer



[View online »](#)

**Product images:**


Western blot analysis of extracts from 293 cells (10% serum-treated, 15min) and HeLa cells (EGF-treated, 200ng/ml, 15min), using FKHR antibody (Lanes 1, 2 and 3) and FKHR (phospho-Ser319) antibody (Lanes 4 and 5).



Immunohistochemistry analysis of paraffin-embedded human breast carcinoma tissue using FKHR (phospho-Ser319) antibody.