

Product datasheet for **TA309982**

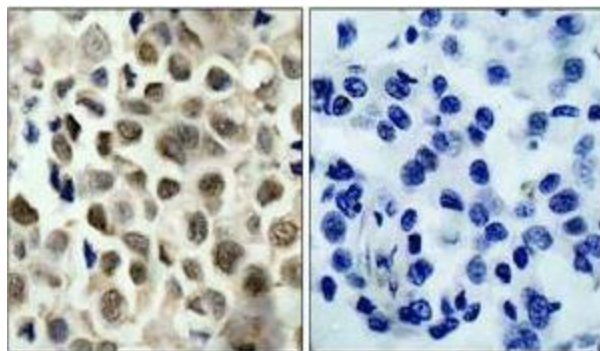
HDAC8 Rabbit Polyclonal Antibody

Product data:

Product Type:	Primary Antibodies
Applications:	IHC
Recommended Dilution:	IHC: 1:50~1:100
Reactivity:	Human, Mouse, Rat
Modifications:	Phospho-specific
Host:	Rabbit
Isotype:	IgG
Clonality:	Polyclonal
Immunogen:	The antiserum was produced against synthesized phosphopeptide derived from humanHDAC8 around the phosphorylation site of serine 39 (R-A-SP-M-V).
Formulation:	phosphate buffered saline (without Mg ²⁺ and Ca ²⁺), pH 7.4, 150mM NaCl, 0.02% sodium azide and 50% glycerol.
Concentration:	lot specific
Purification:	The antibody was affinity-purified from rabbit antiserum by affinity-chromatography usingepitope-specific phosphopeptide. The antibody against non-phosphopeptide was removedby chromatogramphy using non-phosphopeptide corresponding to the phosphorylation site.
Conjugation:	Unconjugated
Storage:	Store at -20°C as received.
Stability:	Stable for 12 months from date of receipt.
Gene Name:	histone deacetylase 8
Database Link:	NP_060956 Entrez Gene 70315 Mouse Entrez Gene 363481 Rat Entrez Gene 55869 Human Q9BY41
Synonyms:	CDA07; CDLS5; HD8; HDACL1; MRXS6; RPD3; WTS
Protein Families:	Druggable Genome, Transcription Factors



[View online »](#)

Product images:

P-Peptide

-

+

Immunohistochemistry analysis of paraffin-embedded human lung carcinoma tissue using HDAC8 (phospho-Ser39) antibody.