

## Product datasheet for **TA309980**

### LIM Kinase 1 (LIMK1) Rabbit Polyclonal Antibody

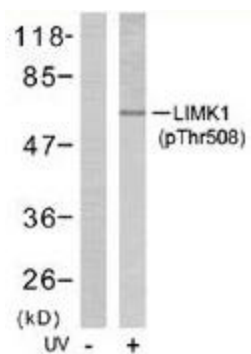
#### Product data:

<b>Product Type:</b>	Primary Antibodies
<b>Applications:</b>	IHC, WB
<b>Recommended Dilution:</b>	WB: 1:500~1:1000, IHC: 1:50~1:100
<b>Reactivity:</b>	Human, Mouse, Rat
<b>Modifications:</b>	Phospho-specific
<b>Host:</b>	Rabbit
<b>Isotype:</b>	IgG
<b>Clonality:</b>	Polyclonal
<b>Immunogen:</b>	The antiserum was produced against synthesized phosphopeptide derived from human LIMK1 around the phosphorylation site of threonine 508 (R-Y-TP-V-V).
<b>Formulation:</b>	phosphate buffered saline (without Mg <sup>2+</sup> and Ca <sup>2+</sup> ), pH 7.4, 150mM NaCl, 0.02% sodium azide and 50% glycerol.
<b>Concentration:</b>	lot specific
<b>Purification:</b>	The antibody was affinity-purified from rabbit antiserum by affinity-chromatography using epitope-specific phosphopeptide. The antibody against non-phosphopeptide was removed by chromatography using non-phosphopeptide corresponding to the phosphorylation site.
<b>Conjugation:</b>	Unconjugated
<b>Storage:</b>	Store at -20°C as received.
<b>Stability:</b>	Stable for 12 months from date of receipt.
<b>Gene Name:</b>	LIM domain kinase 1
<b>Database Link:</b>	<a href="#">NP_058015</a> <a href="#">Entrez Gene 16885 Mouse</a> <a href="#">Entrez Gene 65172 Rat</a> <a href="#">Entrez Gene 3984 Human</a> <a href="#">P53667</a>
<b>Synonyms:</b>	LIM domain kinase 1; LIMK; LIM motif-containing protein kinase; OTTHUMP00000025066
<b>Protein Families:</b>	Druggable Genome, Protein Kinase
<b>Protein Pathways:</b>	Axon guidance, Fc gamma R-mediated phagocytosis, Regulation of actin cytoskeleton

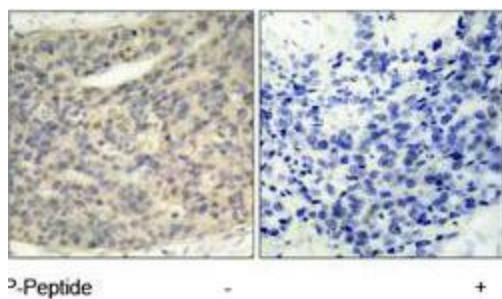


[View online »](#)

## Product images:



Western blot analysis of extracts from NIH/3T3 cells treated and untreated with UV (60min), using LIMK1 (phospho-Thr508) antibody.



Immunohistochemistry analysis of paraffin-embedded human breast carcinoma tissue using LIMK1 (phospho-Thr508) antibody.