

## Product datasheet for **TA309979**

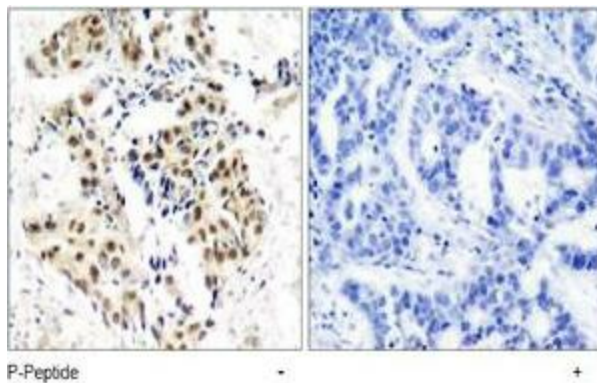
### ATM Rabbit Polyclonal Antibody

#### Product data:

Product Type:	Primary Antibodies
Applications:	IHC
Recommended Dilution:	IHC: 1:50~1:100
Reactivity:	Human, Mouse
Modifications:	Phospho-specific
Host:	Rabbit
Isotype:	IgG
Clonality:	Polyclonal
Immunogen:	The antiserum was produced against synthesized phosphopeptide derived from human ATM around the phosphorylation site of serine 1981 (E-G-SP-Q-S).
Formulation:	phosphate buffered saline (without Mg <sup>2+</sup> and Ca <sup>2+</sup> ), pH 7.4, 150mM NaCl, 0.02% sodium azide and 50% glycerol.
Concentration:	lot specific
Purification:	The antibody was affinity-purified from rabbit antiserum by affinity-chromatography using epitope-specific phosphopeptide. The antibody against non-phosphopeptide was removed by chromatography using non-phosphopeptide corresponding to the phosphorylation site.
Conjugation:	Unconjugated
Storage:	Store at -20°C as received.
Stability:	Stable for 12 months from date of receipt.
Gene Name:	ATM serine/threonine kinase
Database Link:	<a href="#">NP_000042</a> <a href="#">Entrez Gene 11920 Mouse</a> <a href="#">Entrez Gene 472 Human</a> <a href="#">Q13315</a>
Synonyms:	AT1; ATA; ATC; ATD; ATDC; ATE; TEL1; TELO1
Protein Families:	Druggable Genome, Protein Kinase, Transcription Factors
Protein Pathways:	Apoptosis, Cell cycle, p53 signaling pathway



[View online »](#)

**Product images:**

Immunohistochemistry analysis of paraffin-embedded human breast carcinoma tissue using ATM (phospho-Ser1981) antibody.