

Product datasheet for **TA309976**

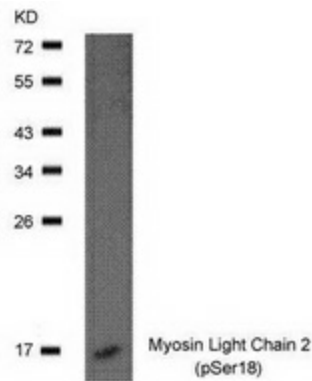
Myosin Light Chain 2 (MYL2) Rabbit Polyclonal Antibody

Product data:

Product Type:	Primary Antibodies
Applications:	IHC, WB
Recommended Dilution:	WB: 1:500~1:1000, IHC: 1:50~1:100
Reactivity:	Human, Mouse, Rat
Modifications:	Phospho-specific
Host:	Rabbit
Isotype:	IgG
Clonality:	Polyclonal
Immunogen:	The antibody was produced against synthesized phosphopeptide derived from human Myosin Light Chain 2 around the phosphorylation site of serine 18 (A-T-SP-N-V).
Formulation:	Rabbit IgG in phosphate buffered saline (without Mg ²⁺ and Ca ²⁺), pH 7.4, 150mM NaCl, 0.02% sodium azide and 50% glycerol.
Concentration:	lot specific
Purification:	Affinity purified
Conjugation:	Unconjugated
Storage:	Store at -20°C as received.
Stability:	Stable for 12 months from date of receipt.
Gene Name:	myosin light chain 2
Database Link:	NP_000423 Entrez Gene 17906 Mouse Entrez Gene 363925 Rat Entrez Gene 4633 Human P10916
Synonyms:	CMH10; MLC-2s; MLC2; v
Protein Pathways:	Cardiac muscle contraction, Dilated cardiomyopathy, Focal adhesion, Hypertrophic cardiomyopathy (HCM), Leukocyte transendothelial migration, Regulation of actin cytoskeleton, Tight junction



[View online »](#)

Product images:


Western blot analysis of extracts from mouse heart tissue using Myosin Light Chain 2 (phospho-Ser18) antibody.

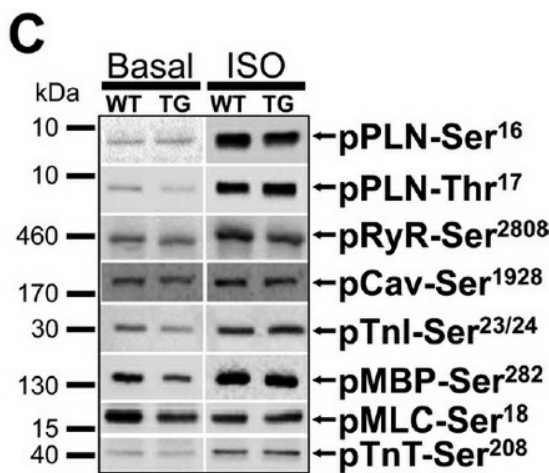
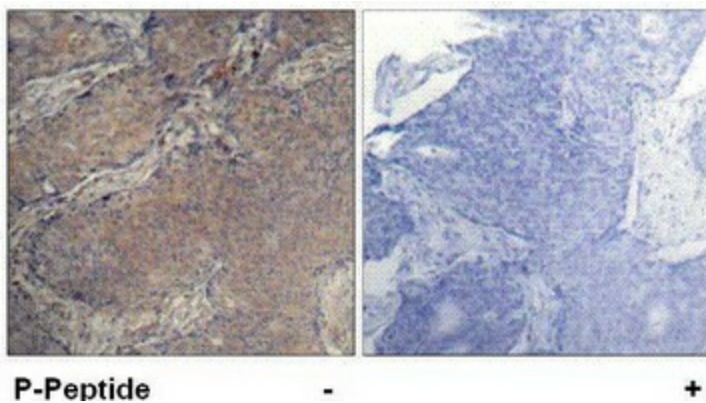


Figure from citation: Western blot analysis of MYL2 (also known as MLC2) protein level by using anti-MYL2 (phospho-Ser18) antibody in mouse heart tissue from WT and B56-overexpressing (TG) mice. [View Citation](#)



Immunohistochemistry analysis of paraffin-embedded human breast carcinoma tissue using Myosin Light Chain 2 (phospho-Ser18) antibody.