

## Product datasheet for **TA309975**

### IGF1 Receptor (IGF1R) Rabbit Polyclonal Antibody

#### Product data:

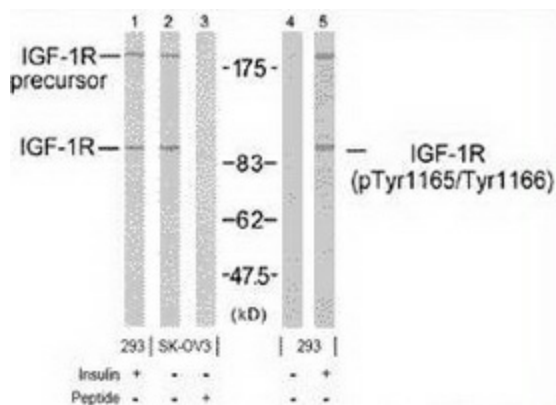
Product Type:	Primary Antibodies
Applications:	WB
Recommended Dilution:	WB: 1:500~1:1000
Reactivity:	Human, Mouse, Rat
Modifications:	Phospho-specific
Host:	Rabbit
Isotype:	IgG
Clonality:	Polyclonal
Immunogen:	The antiserum was produced against synthesized phosphopeptide derived from human IGF-1R around the phosphorylation site of tyrosine 1165/tyrosine 1166(T-D-YP-YP-R-K).
Formulation:	phosphate buffered saline (without Mg <sup>2+</sup> and Ca <sup>2+</sup> ), pH 7.4, 150mM NaCl, 0.02% sodium azide and 50% glycerol.
Concentration:	lot specific
Purification:	The antibody was affinity-purified from rabbit antiserum by affinity-chromatography using epitope-specific phosphopeptide. The antibody against non-phosphopeptide was removed by chromatography using non-phosphopeptide corresponding to the phosphorylation site.
Conjugation:	Unconjugated
Storage:	Store at -20°C as received.
Stability:	Stable for 12 months from date of receipt.
Gene Name:	insulin like growth factor 1 receptor
Database Link:	<a href="#">NP_000866</a> <a href="#">Entrez Gene 16001 Mouse</a> <a href="#">Entrez Gene 25718 Rat</a> <a href="#">Entrez Gene 3480 Human</a> <a href="#">P08069</a>
Synonyms:	CD221; IGFIR; IGFR; JTK13
Protein Families:	Druggable Genome, Protein Kinase, Transmembrane



[View online »](#)

**Protein Pathways:** Adherens junction, Colorectal cancer, Endocytosis, Focal adhesion, Glioma, Long-term depression, Melanoma, Oocyte meiosis, Pathways in cancer, Progesterone-mediated oocyte maturation, Prostate cancer

**Product images:**



Western blot analysis using IGF-1R antibody (Lanes 1, 2 and 3) and IGF-1R (phospho-Tyr1165/Tyr1166) antibody (Lanes 4 and 5).