

## Product datasheet for **TA309974**

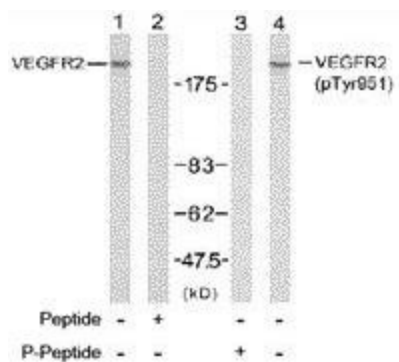
### VEGF Receptor 2 (KDR) Rabbit Polyclonal Antibody

#### Product data:

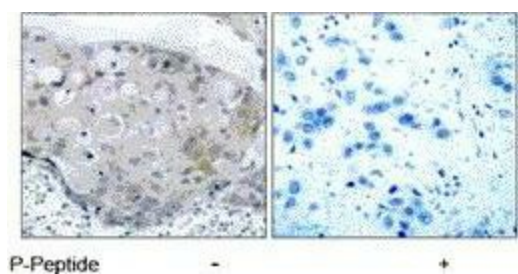
|                       |   |
|-----------------------|---|
| Product Type:         | Primary Antibodies  |
| Applications:         | IHC, WB   |
| Recommended Dilution: | WB: 1:500~1:1000, IHC: 1:50~1:100   |
| Reactivity:           | Human, Mouse, Rat   |
| Modifications:        | Phospho-specific  |
| Host:                 | Rabbit  |
| Isotype:              | IgG   |
| Clonality:            | Polyclonal  |
| Immunogen:            | The antiserum was produced against synthesized phosphopeptide derived from humanVEGFR2 around the phosphorylation site of tyrosine 951 (K-D-YP-V-G).  |
| Formulation:          | phosphate buffered saline (without Mg <sup>2+</sup> and Ca <sup>2+</sup> ), pH 7.4, 150mM NaCl, 0.02% sodium azide and 50% glycerol.  |
| Concentration:        | lot specific  |
| Purification:         | The antibody was affinity-purified from rabbit antiserum by affinity-chromatography usingepitope-specific phosphopeptide. The antibody against non-phosphopeptide was removedby chromatogramphy using non-phosphopeptide corresponding to the phosphorylation site. |
| Conjugation:          | Unconjugated  |
| Storage:              | Store at -20°C as received.   |
| Stability:            | Stable for 12 months from date of receipt.  |
| Gene Name:            | kinase insert domain receptor   |
| Database Link:        | <a href="#">NP_002244</a><br><a href="#">Entrez Gene 16542 Mouse</a> <a href="#">Entrez Gene 25589 Rat</a> <a href="#">Entrez Gene 3791 Human</a><br><a href="#">P35968</a>   |
| Synonyms:             | CD309; FLK1; VEGFR; VEGFR2  |
| Protein Families:     | Druggable Genome, ES Cell Differentiation/IPS, Protein Kinase, Transmembrane  |
| Protein Pathways:     | Cytokine-cytokine receptor interaction, Endocytosis, Focal adhesion, VEGF signaling pathway   |



[View online »](#)

**Product images:**


Western blot analysis of extracts from SK-OV3 cells using VEGFR2 antibody (Lanes 1 and 2) and VEGFR2 (phospho-Tyr951) antibody (Lanes 3 and 4).



Immunohistochemistry analysis of paraffin-embedded human breast carcinoma tissue using VEGFR2 (phospho-Tyr951) antibody.