

Product datasheet for **TA309971**

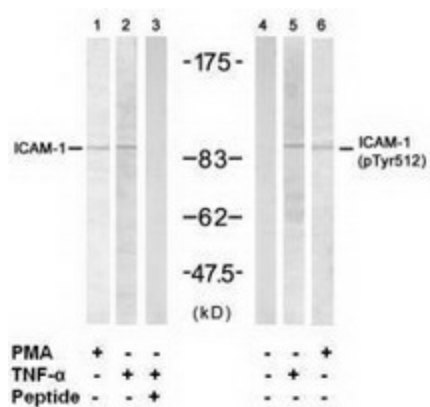
ICAM1 Rabbit Polyclonal Antibody

Product data:

Product Type:	Primary Antibodies
Applications:	WB
Recommended Dilution:	WB: 1:500~1:1000
Reactivity:	Human
Modifications:	Phospho-specific
Host:	Rabbit
Isotype:	IgG
Clonality:	Polyclonal
Immunogen:	The antibody was produced against synthesized phosphopeptide derived from human ICMA-1 around the phosphorylation site of tyrosine 512 (K-K-YP-R-L).
Formulation:	Rabbit IgG in phosphate buffered saline (without Mg ²⁺ and Ca ²⁺), pH 7.4, 150mM NaCl, 0.02% sodium azide and 50% glycerol.
Concentration:	lot specific
Purification:	Affinity purified
Conjugation:	Unconjugated
Storage:	Store at -20°C as received.
Stability:	Stable for 12 months from date of receipt.
Gene Name:	intercellular adhesion molecule 1
Database Link:	NP_000192 Entrez Gene 3383 Human P05362
Synonyms:	BB2; CD54; P3.58
Protein Families:	Druggable Genome, ES Cell Differentiation/IPS, Transmembrane
Protein Pathways:	Cell adhesion molecules (CAMs), Leukocyte transendothelial migration, Natural killer cell mediated cytotoxicity, Viral myocarditis



[View online »](#)

Product images:


Western blot analysis of extracts from HUVEC cells, using ICAM-1 antibody (Lanes 1, 2 and 3) and ICAM-1 (phospho-Tyr512) antibody (Lanes 4, 5 and 6).