

## Product datasheet for **TA309968**

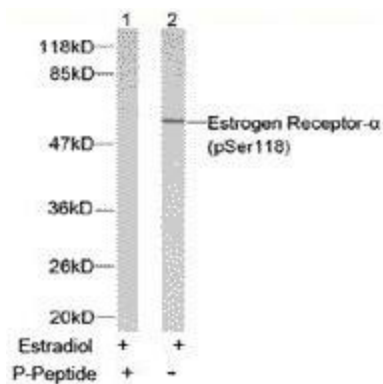
### Estrogen Receptor beta (ESR2) Rabbit Polyclonal Antibody

#### Product data:

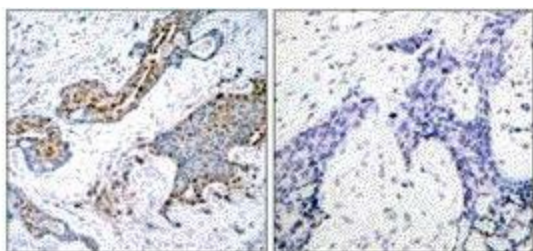
Product Type:	Primary Antibodies
Applications:	IHC, WB
Recommended Dilution:	WB: 1:500~1:1000, IHC: 1:50~1:100
Reactivity:	Mouse, Human
Modifications:	Phospho-specific
Host:	Rabbit
Isotype:	IgG
Clonality:	Polyclonal
Immunogen:	The antiserum was produced against synthesized phosphopeptide derived from human Estrogen Receptor- $\alpha$ around the phosphorylation site of serine 118 (Q-L-SP-P-F).
Formulation:	phosphate buffered saline (without Mg <sup>2+</sup> and Ca <sup>2+</sup> ), pH 7.4, 150mM NaCl, 0.02% sodium azide and 50% glycerol.
Concentration:	lot specific
Purification:	The antibody was affinity-purified from rabbit antiserum by affinity-chromatography using epitope-specific phosphopeptide. The antibody against non-phosphopeptide was removed by chromatography using non-phosphopeptide corresponding to the phosphorylation site.
Conjugation:	Unconjugated
Storage:	Store at -20°C as received.
Stability:	Stable for 12 months from date of receipt.
Gene Name:	estrogen receptor 2
Database Link:	<a href="#">NP_001428</a> <a href="#">Entrez Gene 13983 Mouse</a> <a href="#">Entrez Gene 2100 Human</a> <a href="#">Q92731</a>
Synonyms:	ER-BETA; Erb; ESR-BETA; ESRB; ESTRB; NR3A2
Protein Families:	Druggable Genome, Nuclear Hormone Receptor, Transcription Factors



[View online »](#)

**Product images:**


Western blot analysis of extracts from MCF7 cells using Estrogen Receptor-alpha (phospho-Ser118) antibody.



P-Peptide    -                      +

Immunohistochemistry analysis of paraffin-embedded human breast carcinoma tissue using Estrogen Receptor-alpha (phospho-Ser118) antibody.