

Product datasheet for **TA309963**

PTEN Rabbit Polyclonal Antibody

Product data:

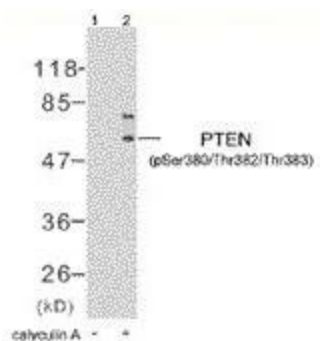
| | |
|-----------------------|--|
| Product Type: | Primary Antibodies |
| Applications: | IHC, WB |
| Recommended Dilution: | WB: 1:500~1:1000, IHC: 1:50~1:100 |
| Reactivity: | Human, Mouse, Rat |
| Modifications: | Phospho-specific |
| Host: | Rabbit |
| Isotype: | IgG |
| Clonality: | Polyclonal |
| Immunogen: | The antiserum was produced against synthesized phosphopeptide derived from human PTEN around the phosphorylation site of serine 380 and threonine 382/383(R-Y-SP-D-TP-TP-D-S). |
| Formulation: | phosphate buffered saline (without Mg ²⁺ and Ca ²⁺), pH 7.4, 150mM NaCl, 0.02% sodium azide and 50% glycerol. |
| Concentration: | lot specific |
| Purification: | The antibody was affinity-purified from rabbit antiserum by affinity-chromatography using epitope-specific phosphopeptide. The antibody against non-phosphopeptide was removed by chromatography using non-phosphopeptide corresponding to the phosphorylation site. |
| Conjugation: | Unconjugated |
| Storage: | Store at -20°C as received. |
| Stability: | Stable for 12 months from date of receipt. |
| Gene Name: | phosphatase and tensin homolog |
| Database Link: | NP_000305 Entrez Gene 19211 Mouse Entrez Gene 50557 Rat Entrez Gene 5728 Human P60484 |
| Synonyms: | 10q23del; BZS; CWS1; DEC; GLM2; MHAM; MMAC1; PTEN1; TEP1 |
| Protein Families: | Druggable Genome, Phosphatase |



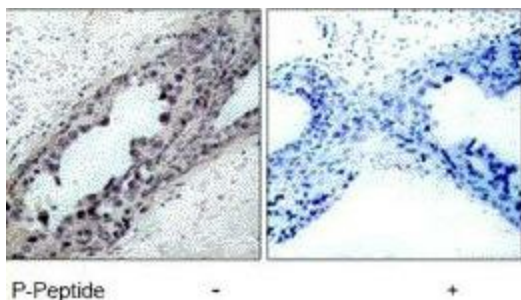
[View online »](#)

Protein Pathways: Endometrial cancer, Focal adhesion, Glioma, Inositol phosphate metabolism, Melanoma, p53 signaling pathway, Pathways in cancer, Phosphatidylinositol signaling system, Prostate cancer, Small cell lung cancer, Tight junction

Product images:



Western blot analysis of extracts from HT29 cells untreated or treated with calyculin A, using PTEN (phospho-Ser380/Thr382/Thr383) antibody.



Immunohistochemistry analysis of paraffin-embedded human breast carcinoma tissue using PTEN (phospho-Ser380/Thr382/Thr383) antibody.