

## Product datasheet for **TA309959**

### STAT5A Rabbit Polyclonal Antibody

#### Product data:

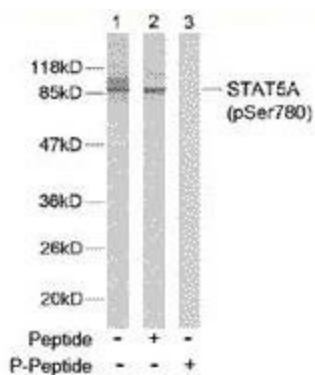
Product Type:	Primary Antibodies
Applications:	IHC, WB
Recommended Dilution:	WB: 1:500~1:1000, IHC: 1:50~1:100
Reactivity:	Human, Mouse, Rat
Modifications:	Phospho-specific
Host:	Rabbit
Isotype:	IgG
Clonality:	Polyclonal
Immunogen:	The antiserum was produced against synthesized phosphopeptide derived from humanSTAT5A around the phosphorylation site of serine 780 (R-L-SP-P-P).
Formulation:	phosphate buffered saline (without Mg <sup>2+</sup> and Ca <sup>2+</sup> ), pH 7.4, 150mM NaCl, 0.02% sodium azide and 50% glycerol.
Concentration:	lot specific
Purification:	The antibody was affinity-purified from rabbit antiserum by affinity-chromatography usingepitope-specific phosphopeptide. The antibody against non-phosphopeptide was removedby chromatography using non-phosphopeptide corresponding to the phosphorylation site.
Conjugation:	Unconjugated
Storage:	Store at -20°C as received.
Stability:	Stable for 12 months from date of receipt.
Gene Name:	signal transducer and activator of transcription 5A
Database Link:	<a href="#">NP_003143</a> <a href="#">Entrez Gene 20850 Mouse</a> <a href="#">Entrez Gene 24918 Rat</a> <a href="#">Entrez Gene 6776 Human</a> <a href="#">P42229</a>
Synonyms:	MGF; STAT5
Protein Families:	Druggable Genome, ES Cell Differentiation/IPS, Stem cell relevant signaling - DSL/Notch pathway, Stem cell relevant signaling - JAK/STAT signaling pathway, Transcription Factors



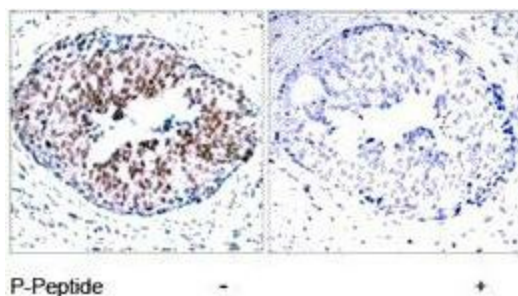
[View online »](#)

**Protein Pathways:** Acute myeloid leukemia, Chronic myeloid leukemia, ErbB signaling pathway, Jak-STAT signaling pathway, Pathways in cancer

**Product images:**



Western blot analysis of extracts from HeLa cells using STAT5A (phospho-Ser780) antibody.



Immunohistochemistry analysis of paraffin-embedded human breast carcinoma tissue using STAT5A (phospho-Ser780) antibody.