

Product datasheet for **TA309957**

STAT4 Rabbit Polyclonal Antibody

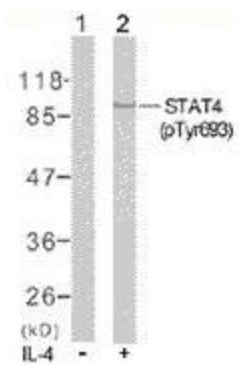
Product data:

Product Type:	Primary Antibodies
Applications:	IHC, WB
Recommended Dilution:	WB: 1:500~1:1000, IHC: 1:50~1:100
Reactivity:	Human, Mouse, Rat
Modifications:	Phospho-specific
Host:	Rabbit
Isotype:	IgG
Clonality:	Polyclonal
Immunogen:	The antiserum was produced against synthesized phosphopeptide derived from human STAT4 around the phosphorylation site of tyrosine 693 (K-G-YP-V-P).
Formulation:	phosphate buffered saline (without Mg ²⁺ and Ca ²⁺), pH 7.4, 150mM NaCl, 0.02% sodium azide and 50% glycerol.
Concentration:	lot specific
Purification:	The antibody was affinity-purified from rabbit antiserum by affinity-chromatography using epitope-specific phosphopeptide. The antibody against non-phosphopeptide was removed by chromatography using non-phosphopeptide corresponding to the phosphorylation site.
Conjugation:	Unconjugated
Storage:	Store at -20°C as received.
Stability:	Stable for 12 months from date of receipt.
Gene Name:	signal transducer and activator of transcription 4
Database Link:	NP_003142 Entrez Gene 20849 Mouse Entrez Gene 367264 Rat Entrez Gene 6775 Human Q14765
Synonyms:	SLEB11
Protein Families:	Druggable Genome, Transcription Factors
Protein Pathways:	Jak-STAT signaling pathway

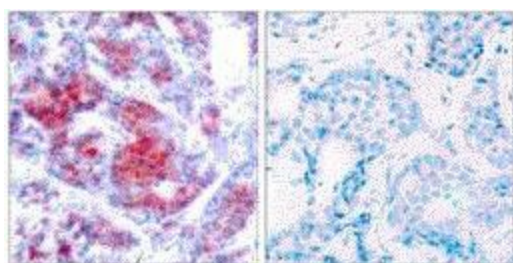


[View online »](#)

Product images:



Western blot analysis of extracts from HeLa cells using STAT4 (phospho-Tyr693) antibody.



P-Peptide - +

Immunohistochemistry analysis of paraffin-embedded human breast carcinoma tissue using STAT4 (phospho-Tyr693) antibody.