

## Product datasheet for **TA309955**

### STAT1 Rabbit Polyclonal Antibody

#### Product data:

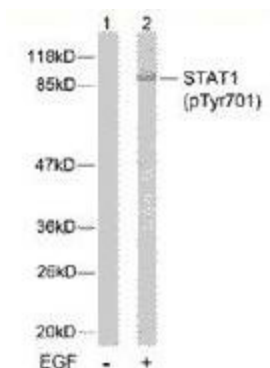
Product Type:	Primary Antibodies
Applications:	IHC, WB
Recommended Dilution:	WB: 1:500~1:1000, IHC: 1:50~1:100
Reactivity:	Human, Mouse, Rat
Modifications:	Phospho-specific
Host:	Rabbit
Isotype:	IgG
Clonality:	Polyclonal
Immunogen:	The antiserum was produced against synthesized phosphopeptide derived from human STAT1 around the phosphorylation site of tyrosine 701 (T-G-YP-I-K).
Formulation:	phosphate buffered saline (without Mg <sup>2+</sup> and Ca <sup>2+</sup> ), pH 7.4, 150mM NaCl, 0.02% sodium azide and 50% glycerol.
Concentration:	lot specific
Purification:	The antibody was affinity-purified from rabbit antiserum by affinity-chromatography using epitope-specific phosphopeptide. The antibody against non-phosphopeptide was removed by chromatography using non-phosphopeptide corresponding to the phosphorylation site.
Conjugation:	Unconjugated
Storage:	Store at -20°C as received.
Stability:	Stable for 12 months from date of receipt.
Gene Name:	signal transducer and activator of transcription 1
Database Link:	<a href="#">NP_009330</a> <a href="#">Entrez Gene 20846 Mouse</a> <a href="#">Entrez Gene 25124 Rat</a> <a href="#">Entrez Gene 6772 Human</a> <a href="#">P42224</a>
Synonyms:	CANDF7; IMD31A; IMD31B; IMD31C; ISGF-3; STAT91
Protein Families:	Druggable Genome, Transcription Factors



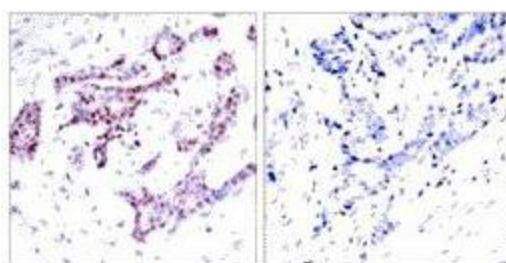
[View online »](#)

**Protein Pathways:** Chemokine signaling pathway, Jak-STAT signaling pathway, Pancreatic cancer, Pathways in cancer, Toll-like receptor signaling pathway

**Product images:**



Western blot analysis of extracts from MCF7 cells using STAT1 (phospho-Tyr701) antibody.



Immunohistochemistry analysis of paraffin-embedded human breast carcinoma tissue using STAT1 (phospho-Tyr701) antibody.