

Product datasheet for **TA309953**

GATA1 Rabbit Polyclonal Antibody

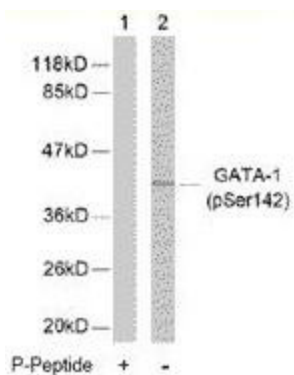
Product data:

Product Type:	Primary Antibodies
Applications:	IHC, WB
Recommended Dilution:	WB: 1:500~1:1000, IHC: 1:50~1:100
Reactivity:	Human, Mouse, Rat
Modifications:	Phospho-specific
Host:	Rabbit
Isotype:	IgG
Clonality:	Polyclonal
Immunogen:	The antiserum was produced against synthesized phosphopeptide derived from humanGATA-1 around the phosphorylation site of serine 142 (R-L-SP-P-D).
Formulation:	phosphate buffered saline (without Mg ²⁺ and Ca ²⁺), pH 7.4, 150mM NaCl, 0.02% sodium azide and 50% glycerol.
Concentration:	lot specific
Purification:	The antibody was affinity-purified from rabbit antiserum by affinity-chromatography usingepitope-specific phosphopeptide. The antibody against non-phosphopeptide was removedby chromatography using non-phosphopeptide corresponding to the phosphorylation site.
Conjugation:	Unconjugated
Storage:	Store at -20°C as received.
Stability:	Stable for 12 months from date of receipt.
Gene Name:	GATA binding protein 1
Database Link:	NP_002040 Entrez Gene 14460 Mouse Entrez Gene 25172 Rat Entrez Gene 2623 Human P15976
Synonyms:	ERYF1; GATA-1; GF-1; GF1; NF-E1; NFE1; XLANP; XLTDA; XLTT
Protein Families:	Adult stem cells, Druggable Genome, ES Cell Differentiation/IPS, Transcription Factors

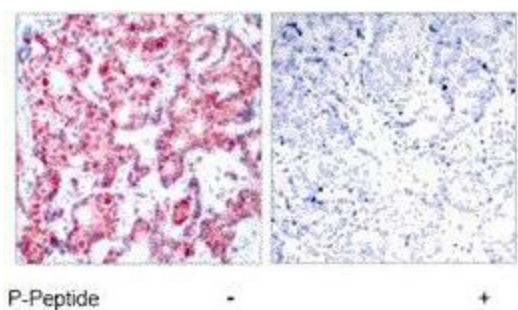


[View online »](#)

Product images:



Western blot analysis of extracts from K562 cells using GATA-1 (phospho-Ser142) antibody.



Immunohistochemistry analysis of paraffin-embedded human breast carcinoma tissue using GATA-1 (phospho-Ser142) antibody.