

Product datasheet for **TA309951**

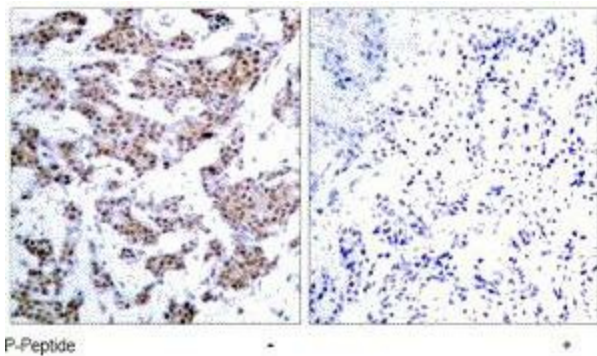
MEF2A Rabbit Polyclonal Antibody

Product data:

Product Type:	Primary Antibodies
Applications:	IHC
Recommended Dilution:	IHC: 1:50-1:100
Reactivity:	Human, Mouse, Rat
Modifications:	Phospho-specific
Host:	Rabbit
Isotype:	IgG
Clonality:	Polyclonal
Immunogen:	The antiserum was produced against synthesized phosphopeptide derived from human MEF2A around the phosphorylation site of threonine 312 (L-A-TP-P-V).
Formulation:	phosphate buffered saline (without Mg ²⁺ and Ca ²⁺), pH 7.4, 150mM NaCl, 0.02% sodium azide and 50% glycerol.
Concentration:	lot specific
Purification:	The antibody was affinity-purified from rabbit antiserum by affinity-chromatography using epitope-specific phosphopeptide. The antibody against non-phosphopeptide was removed by chromatography using non-phosphopeptide corresponding to the phosphorylation site.
Conjugation:	Unconjugated
Storage:	Store at -20°C as received.
Stability:	Stable for 12 months from date of receipt.
Gene Name:	myocyte enhancer factor 2A
Database Link:	NP_005578 Entrez Gene 17258 Mouse Entrez Gene 309957 Rat Entrez Gene 4205 Human Q02078
Synonyms:	ADCAD1; mef2; RSRFC4; RSRFC9
Protein Families:	Transcription Factors



[View online »](#)

Product images:

Immunohistochemistry analysis of paraffin-embedded human breast carcinoma tissue using MEF2A (phospho-Thr312) antibody.