

## Product datasheet for **TA309950**

### ELK1 Rabbit Polyclonal Antibody

#### Product data:

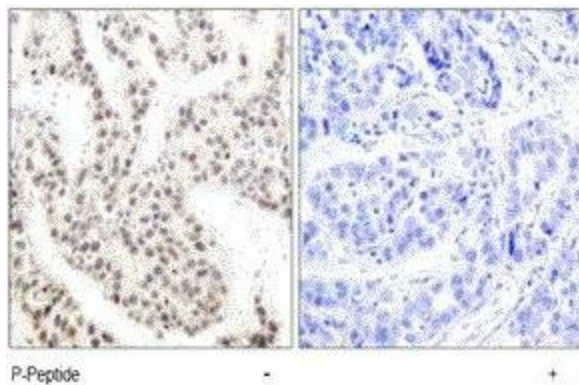
Product Type:	Primary Antibodies
Applications:	IHC
Recommended Dilution:	IHC: 1:50-1:100
Reactivity:	Human, Mouse, Rat
Modifications:	Phospho-specific
Host:	Rabbit
Isotype:	IgG
Clonality:	Polyclonal
Immunogen:	The antiserum was produced against synthesized phosphopeptide derived from human Elk-1 around the phosphorylation site of threonine 417 (L-S-TP-P-V).
Formulation:	phosphate buffered saline (without Mg <sup>2+</sup> and Ca <sup>2+</sup> ), pH 7.4, 150mM NaCl, 0.02% sodium azide and 50% glycerol.
Concentration:	lot specific
Purification:	The antibody was affinity-purified from rabbit antiserum by affinity-chromatography using epitope-specific phosphopeptide. The antibody against non-phosphopeptide was removed by chromatography using non-phosphopeptide corresponding to the phosphorylation site.
Conjugation:	Unconjugated
Storage:	Store at -20°C as received.
Stability:	Stable for 12 months from date of receipt.
Gene Name:	ELK1, ETS transcription factor
Database Link:	<a href="#">NP_005220</a> <a href="#">Entrez Gene 13712 Mouse</a> <a href="#">Entrez Gene 314436 Rat</a> <a href="#">Entrez Gene 2002 Human P19419</a>
Synonyms:	ELK1; ELK1 protein; ETS-like gene 1; member of ETS oncogene family; OTTHUMP00000023224; OTTHUMP00000023225
Protein Families:	Druggable Genome, Transcription Factors



[View online »](#)

**Protein Pathways:** Endometrial cancer, ErbB signaling pathway, Focal adhesion, GnRH signaling pathway, Insulin signaling pathway, MAPK signaling pathway, Prion diseases

**Product images:**



Immunohistochemistry analysis of paraffin-embedded human breast carcinoma tissue using Elk-1 (phospho-Thr417) antibody.