

Product datasheet for **TA309949**

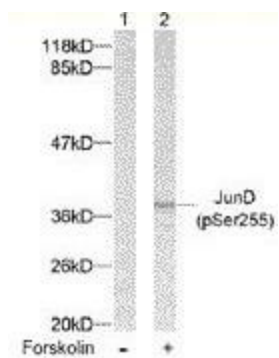
JUND Rabbit Polyclonal Antibody

Product data:

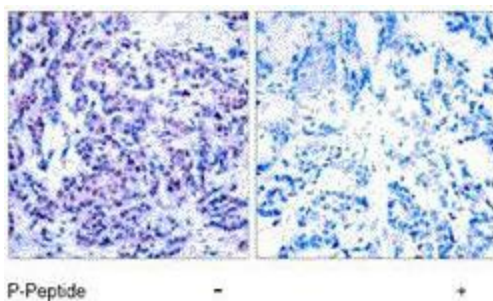
Product Type:	Primary Antibodies
Applications:	IHC, WB
Recommended Dilution:	WB: 1:500~1:1000, IHC: 1:50~1:100
Reactivity:	Human, Mouse, Rat
Modifications:	Phospho-specific
Host:	Rabbit
Isotype:	IgG
Clonality:	Polyclonal
Immunogen:	The antiserum was produced against synthesized phosphopeptide derived from human JunD around the phosphorylation site of serine 255 (G-E-SP-P-P).
Formulation:	phosphate buffered saline (without Mg ²⁺ and Ca ²⁺), pH 7.4, 150mM NaCl, 0.02% sodium azide and 50% glycerol.
Concentration:	lot specific
Purification:	The antibody was affinity-purified from rabbit antiserum by affinity-chromatography using epitope-specific phosphopeptide. The antibody against non-phosphopeptide was removed by chromatography using non-phosphopeptide corresponding to the phosphorylation site.
Conjugation:	Unconjugated
Storage:	Store at -20°C as received.
Stability:	Stable for 12 months from date of receipt.
Gene Name:	JunD proto-oncogene, AP-1 transcription factor subunit
Database Link:	NP_005345 Entrez Gene 16478 Mouse Entrez Gene 24518 Rat Entrez Gene 3727 Human P17535
Synonyms:	AP-1
Protein Families:	Druggable Genome, Transcription Factors
Protein Pathways:	MAPK signaling pathway



[View online »](#)

Product images:


Western blot analysis of extract from 293 cells using JunD (Phospho-Ser255) antibody.



Immunohistochemistry analysis of paraffin-embedded human breast carcinoma tissue using JunD (phospho-Ser255) antibody.