

## Product datasheet for **TA309945**

### **NFKB1 Rabbit Polyclonal Antibody**

#### **Product data:**

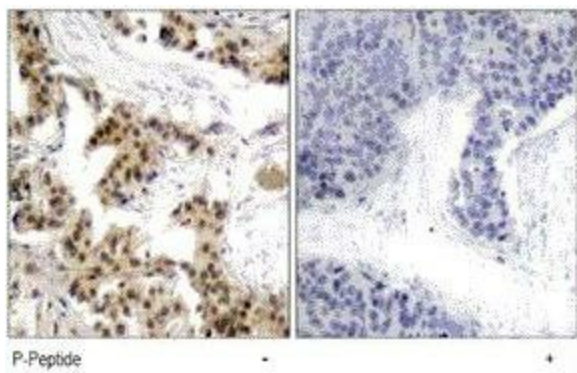
<b>Product Type:</b>	Primary Antibodies
<b>Applications:</b>	IHC
<b>Recommended Dilution:</b>	WB: 1:500~1:1000, IHC: 1:50~1:100
<b>Reactivity:</b>	Human
<b>Modifications:</b>	Phospho-specific
<b>Host:</b>	Rabbit
<b>Isotype:</b>	IgG
<b>Clonality:</b>	Polyclonal
<b>Immunogen:</b>	The antiserum was produced against synthesized phosphopeptide derived from humanNF-κB p105/p50 around the phosphorylation site of serine 893 (A-S-SP-P-V).
<b>Formulation:</b>	phosphate buffered saline (without Mg <sup>2+</sup> and Ca <sup>2+</sup> ), pH 7.4, 150mM NaCl, 0.02% sodium azide and 50% glycerol.
<b>Concentration:</b>	lot specific
<b>Purification:</b>	The antibody was affinity-purified from rabbit antiserum by affinity-chromatography usingepitope-specific phosphopeptide. The antibody against non-phosphopeptide was removedby chromatography using non-phosphopeptide corresponding to the phosphorylation site.
<b>Conjugation:</b>	Unconjugated
<b>Storage:</b>	Store at -20°C as received.
<b>Stability:</b>	Stable for 12 months from date of receipt.
<b>Gene Name:</b>	nuclear factor kappa B subunit 1
<b>Database Link:</b>	<a href="#">NP_003989</a> <a href="#">Entrez Gene 4790 Human P19838</a>
<b>Synonyms:</b>	CVID12; EBP-1; KBF1; NF-kappa-B; NF-kappaB; NF-kB1; NFkappaB; NFKB-p50; NFKB-p105; p50; p105
<b>Protein Families:</b>	Druggable Genome, Transcription Factors



[View online »](#)

**Protein Pathways:**

Acute myeloid leukemia, Adipocytokine signaling pathway, Apoptosis, B cell receptor signaling pathway, Chemokine signaling pathway, Chronic myeloid leukemia, Cytosolic DNA-sensing pathway, Epithelial cell signaling in Helicobacter pylori infection, MAPK signaling pathway, Metabolic pathways, Neurotrophin signaling pathway, NOD-like receptor signaling pathway, Pancreatic cancer, Pathways in cancer, Prostate cancer, RIG-I-like receptor signaling pathway, Small cell lung cancer, T cell receptor signaling pathway, Toll-like receptor signaling pathway

**Product images:**

Immunohistochemistry analysis of paraffin-embedded human breast carcinoma tissue using NF-Kb p150/p50 (Phospho-Ser893) antibody.