

## Product datasheet for **TA309941**

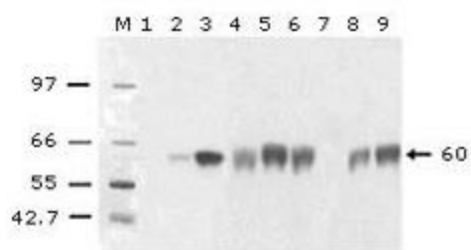
### **GNRHR Mouse Monoclonal Antibody [Clone ID: AT2.G7]**

#### **Product data:**

<b>Product Type:</b>	Primary Antibodies
<b>Clone Name:</b>	AT2.G7
<b>Applications:</b>	WB
<b>Recommended Dilution:</b>	WB: 1:1000, IHC: 1:200
<b>Reactivity:</b>	Human
<b>Host:</b>	Mouse
<b>Isotype:</b>	IgG
<b>Clonality:</b>	Monoclonal
<b>Immunogen:</b>	A mixture of peptides from different regions of GnRH receptor protein.
<b>Formulation:</b>	PBS, pH 7.4 with 0.05% sodium azide.
<b>Concentration:</b>	lot specific
<b>Conjugation:</b>	Unconjugated
<b>Storage:</b>	Store at -20°C as received.
<b>Stability:</b>	Stable for 12 months from date of receipt.
<b>Gene Name:</b>	gonadotropin releasing hormone receptor
<b>Database Link:</b>	<a href="#">NP_000397</a> <a href="#">Entrez Gene 2798 Human</a> <a href="#">P30968</a>
<b>Synonyms:</b>	GNRHR1; GRHR; HH7; LHRHR; LRHR
<b>Protein Families:</b>	Druggable Genome, GPCR, Transmembrane
<b>Protein Pathways:</b>	GnRH signaling pathway, Neuroactive ligand-receptor interaction



[View online »](#)

**Product images:**

Western blot analysis of the molecular weight and levels of gonadotropin-releasing hormone (GnRH) receptor protein. Lanes 1 and 2: tissue extracts from different stages of ovarian cancers. Lane M: protein markers, molecular weight in kDa.