

Product datasheet for **TA309939**

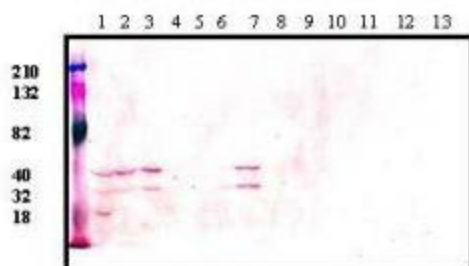
TSPY1 Rabbit Polyclonal Antibody

Product data:

Product Type:	Primary Antibodies
Applications:	WB
Recommended Dilution:	WB: 1:1000, ELISA: 1:2000-1:5000
Reactivity:	Human
Host:	Rabbit
Isotype:	IgG
Clonality:	Polyclonal
Immunogen:	Recombinant human TSPY1 protein
Formulation:	Rabbit IgG in phosphate buffered saline (without Mg ²⁺ and Ca ²⁺), pH 7.4, 150mM NaCl, 0.02% sodium azide and 50% glycerol.
Concentration:	lot specific
Purification:	Affinity purified
Conjugation:	Unconjugated
Storage:	Store at -20°C as received.
Stability:	Stable for 12 months from date of receipt.
Gene Name:	testis specific protein, Y-linked 1
Database Link:	NP_003299 Entrez Gene 7258 Human Q01534
Synonyms:	CT78; DYS14; pJA923; TSPY



[View online »](#)

Product images:

Western blot analysis of TSPY1 expression in 14 different human cell lines from lane 1 to 14: Lung (A549); a Retinoblastoma cell line; Bone (TUSO2); Cervical (HeLa); Fibrosarcoma (HT1080); Breast (MDA_MB-468); Neuroblastoma (Sy5y); Liver (Hep3B); Placenta (JEG-13); Lymphoma (Jurkat); SKOV3; Prostate (PC-3); Ovary (Ovcar3); Colon (HT29). The top band (36 kDa) indicates the position of TSPY1 protein.