

Product datasheet for **TA309936**

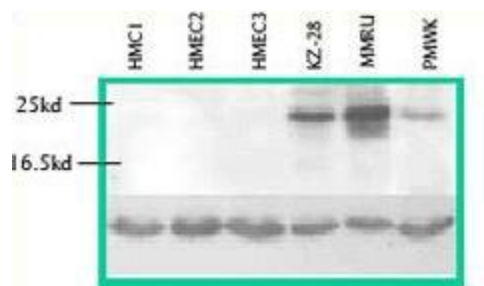
CTHRC1 Rabbit Polyclonal Antibody

Product data:

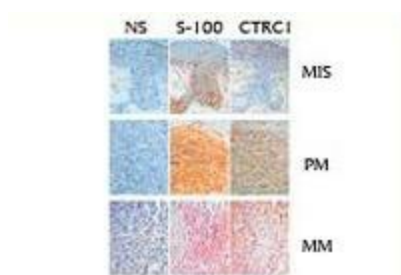
Product Type:	Primary Antibodies
Applications:	IHC, WB
Recommended Dilution:	WB: 1:1000, ELISA: 1:2000-5000
Reactivity:	Human
Host:	Rabbit
Isotype:	IgG
Clonality:	Polyclonal
Immunogen:	Peptide corresponding to the C-terminal of CTHRC1 protein.
Formulation:	PBS, pH 7.4 with 0.05% sodium azide.
Concentration:	lot specific
Purification:	IgG Affinity Purification
Conjugation:	Unconjugated
Storage:	Store at -20°C as received.
Stability:	Stable for 12 months from date of receipt.
Gene Name:	collagen triple helix repeat containing 1
Database Link:	NP_612464 Entrez Gene 115908 Human Q96CG8
Synonyms:	collagen triple helix repeat containing 1
Protein Families:	Secreted Protein



[View online »](#)

Product images:

Western blot analysis of CTHRC1 protein expression in cultured melanocytes and melanoma cell lines. CTHR1 protein is readily detectable from three melanoma cell lines (KZ-28, MMRU and PMWK) but not detectable from any normal melanocytes (HEMC1-C3).



Immunohistochemistry analysis of melanoma tissues by anti-CTHRC1 antibody. CTHR1 protein is negative in melanoma in situ (MIS), positive in primary melanoma (PM), and very strong positive in metastatic melanoma (MM).