

Product datasheet for **TA309934**

ZMPSTE24 Rabbit Polyclonal Antibody

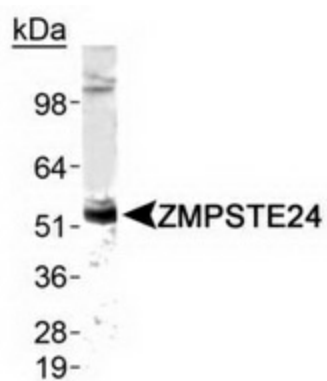
Product data:

Product Type:	Primary Antibodies
Applications:	WB
Recommended Dilution:	WB 1.0-2.0 ug/ml
Reactivity:	Human, Mouse, Primate, Zebrafish
Host:	Rabbit
Clonality:	Polyclonal
Immunogen:	A synthetic peptide made to an N-terminal portion of the human ZMPSTE24 protein sequence (between residues 1-100). [Swiss-Prot O75844]
Formulation:	Tris-glycine, 150mM NaCl and 0.05% Sodium Azide
Concentration:	lot specific
Purification:	Peptide affinity purified
Conjugation:	Unconjugated
Storage:	Store at -20°C as received.
Stability:	Stable for 12 months from date of receipt.
Gene Name:	zinc metallopeptidase STE24
Database Link:	NP_005848 Entrez Gene 230709 Mouse Entrez Gene 10269 Human O75844
Synonyms:	FACE-1; FACE1; HGPS; PRO1; STE24; Ste24p
Protein Families:	Druggable Genome, Protease, Transmembrane



[View online »](#)

Product images:



Western Blot: ZMPSTE24 antibody - Detection of ZMPSTE24 in human testis using anti-ZMPSTE24.