

Product datasheet for **TA309933**

XAGE1 (XAGE1E) Rabbit Polyclonal Antibody

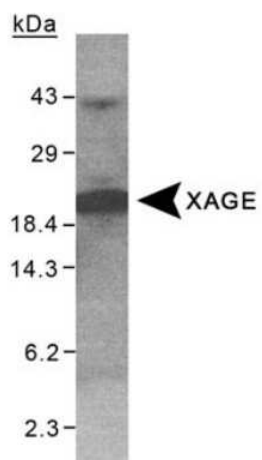
Product data:

Product Type:	Primary Antibodies
Applications:	IP, WB
Recommended Dilution:	Immunoprecipitation: 1:10-1:500, Western Blot: 1:500
Reactivity:	Human
Host:	Rabbit
Clonality:	Polyclonal
Immunogen:	Synthetic peptide made to an internal sequence within the human XAGE-1 protein.
Formulation:	Sodium Azide
Purification:	Whole antisera
Conjugation:	Unconjugated
Storage:	Store at -20°C as received.
Stability:	Stable for 12 months from date of receipt.
Gene Name:	X antigen family member 1E
Database Link:	NP_001091066 Entrez Gene 653048 Entrez Gene 653067 Human Q9HD64
Synonyms:	CT12.1; CT12.1C; CTP9; GAGED2; XAGE-1



[View online »](#)

Product images:



Western Blot: XAGE1 Antibody TA309933 -
Detection of XAGE on purified His-XAGE (100 ug)
using TA309933.