

## Product datasheet for **TA309931**

### WNK4 Rabbit Polyclonal Antibody

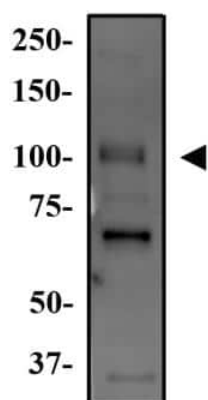
#### Product data:

Product Type:	Primary Antibodies
Applications:	Electron Microscopy, IHC, IP, WB
Recommended Dilution:	Electron Microscopy, Immunohistochemistry-Paraffin, Immunoprecipitation, Immunohistochemistry-Frozen, Immunohistochemistry, Western Blot: 2 ug/ml
Reactivity:	Human, Mouse, Rat
Host:	Rabbit
Clonality:	Polyclonal
Immunogen:	A synthetic peptide sequence made to a region of the human WNK4 protein between residues 200-300.
Formulation:	PBS and 0.05% Sodium Azide
Concentration:	lot specific
Purification:	Peptide affinity purified
Conjugation:	Unconjugated
Storage:	Store at -20°C as received.
Stability:	Stable for 12 months from date of receipt.
Gene Name:	WNK lysine deficient protein kinase 4
Database Link:	<a href="#">NP_115763</a> <a href="#">Entrez Gene 69847 Mouse</a> <a href="#">Entrez Gene 287715 Rat</a> <a href="#">Entrez Gene 65266 Human</a> <a href="#">Q96J92</a>
Synonyms:	PHA2B; PRKWNK4
Protein Families:	Druggable Genome, Protein Kinase



[View online »](#)

## Product images:



Western Blot: WNK4 Antibody TA309931 -  
Western Blot Image of anti-WNK4. Whole cell protein from Hek293 was separated on a 7.5% gel by SDS-PAGE, transferred to PVDF membrane and blocked in 5% non-fat milk in TBST. The membrane was probed with 2.0 ug/ml anti-WNK4 in 1% milk and detected with an anti-rabbit HRP secondary antibody using chemiluminescence